

NEW HAVEN CHARGERS

WOMEN'S BASKETBALL

RYAN MARKS

Assistant Director of Athletic Communication

Charger Gym, 300 Boston Post Road, West Haven, CT 06516

O: 203.479.4118

rmark4@unh.newhaven.edu | www.newhavenchargers.

2020-21 SCHEDULE/RESULTS

OVERALL: 5-8 • NE10: 0-7

NOVEMBER

| | | |
|---------|-----------------------------|-------------|
| Sat. 13 | BLOOMFIELD | W; 63-37 |
| Sun. 14 | GEORGIAN COURT | W; 76-74 |
| Wed. 17 | at College of Staten Island | W; 72-64 OT |
| Sat. 20 | at Le Moyne* | L; 48-65 |
| Tue. 23 | PACE* | L; 51-72 |
| Sun. 28 | SAINT THOMAS AQUINAS | W; 56-43 |

DECEMBER

| | | |
|---------|--------------------------------|-----------|
| Wed. 1 | at Southern Connecticut State* | L; 64-83 |
| Sat. 4 | at Saint Rose* | L; 54-58 |
| Tue. 7 | AMERICAN INTERNATIONAL* | L; 54-66 |
| Fri. 17 | at Bloomfield | W; 62-57 |
| Sun. 19 | CHESTNUT HILL | L; 61-66 |
| Thu. 30 | at Bridgeport | POSTPONED |

JANUARY

| | | |
|---------|-------------------------|-----------|
| Sat. 8 | SAINT MICHAEL'S* | POSTPONED |
| Sat. 15 | STONEHILL* | L; 61-64 |
| Mon. 17 | ADELPHI* | L; 58-59 |
| Wed. 19 | at Saint Anselm* | 5:30 PM |
| Sat. 22 | ASSUMPTION* | 1:30 PM |
| Tue. 25 | SOUTHERN NEW HAMPSHIRE* | 5:30 PM |
| Sat. 29 | at Franklin Pierce* | 1:30 PM |

FEBRUARY

| | | |
|----------|---------------------------------|----------|
| Wed. 2 | at Pace* | 5:30 PM |
| Sat. 5 | LE MOYNE* | 1:30 PM |
| Tue. 8 | SAINT ROSE* | 5:30 PM |
| Thur. 10 | at Bentley* | 5:30 PM |
| Sat. 12 | at American International* | 1:30 PM |
| Wed. 16 | SOUTHERN CONNECTICUT STATE* | 5:30 PM |
| Wed. 19 | at Southern Conn. State* | W, 61-56 |
| Fri. 25 | NE10 Championship First Round | TBD |
| Sun. 27 | NE10 Championship Quarterfinals | TBD |

MARCH

| | | |
|--------|------------------------------|-----|
| Thu. 3 | NE10 Championship Semifinals | TBD |
| Sun. 6 | NE10 Championship Finals | TBD |

* Northeast-10 Conference game

Home games in **BOLD CAPS** played at Charger Gymnasium

Neutral site games in *Italics*



NEW HAVEN (5-8, 0-7 NE10)
CHARGERS

AT A GLANCE

| | |
|--|---------------------------|
| Opening Tip..... | 5:30 PM |
| Location..... | Manchester, N.H. |
| Venue..... | Stoutenburgh Gymnasium |
| Capacity..... | 1,500 |
| Live Video..... | NE10NOW.tv |
| Live Stats...NewHavenChargers.com/WBBLiveStats | |
| All-Time Series..... | 12-13 |
| Active Streak..... | L2 |
| Last Meeting..... | March 1, 2020 (44-55 STA) |
| First Meeting..... | Dec. 1, 1988 (71-67 UNH) |
| Buff vs. Opponent..... | 1-2 |



SAINT ANSELM (8-6, 4-3 NE10)
HAWKS

PROJECTED NEW HAVEN STARTERS

11 CAMRYN DEBOSE

SR • 5-10 • GUARD
Wellington, Fla.

| PPG | RPG | STL | MIN |
|------|-----|-----|------|
| 16.5 | 4.5 | 28 | 34.9 |



NOTES:

- Her 16.5 points per game ranks sixth in the NE10
- Set a season-high in rebounds (6) and FG made (7) on Nov. 17
- Career-high 8 FGs at Saint Anselm (NE10 Q'Finals)
- Scored 22 points against Georgian Court on Nov. 14
- Tied career-high with 5 three-pointers at SNHU on Jan. 28
- Career-high 6 steals at Assumption on Jan. 25

12 BRIANA VAN CLEAF

JR • 5-9 • FORWARD
Staten Island, N.Y.

| PPG | RPG | STL | MIN |
|-----|-----|-----|------|
| 5.8 | 6.8 | 11 | 26.8 |



NOTES:

- Transferred to New Haven from the New York Institute of Technology
- Scored 10 points in season-opener vs Bloomfield on Nov. 13
- Pulled down a season-high 11 rebounds on Nov. 28 against Saint Thomas Aquinas.
- Her 6.8 rebounds per game is 13th in conference.

22 BIONCA CHAMBERS

GR • 5-7 • GUARD
Bronx, N.Y.

| PPG | RPG | STL | MIN |
|-----|-----|-----|------|
| 6.3 | 2.8 | 15 | 19.7 |



NOTES:

- Scored 11 points against Georgian Court on Nov. 14
- Tied career-high in blocks with three against the College of Staten Island
- Pulled down season-high seven rebounds on Nov. 17
- Career-high 14 points and four assists at Saint Michael's on Jan. 11

25 BRIE PERGOLA

GR • 5-8 • GUARD
TORRINGTON, CONN.

| PPG | RPG | AST | MIN |
|------|-----|-----|------|
| 11.2 | 4.2 | 35 | 36.5 |



NOTES:

- .384 3FG% was 5th in NE10 last season
- 25th in conference with 11.2 points per game
- Averaging 3.2 assists per game/10th in NE10
- Set career-high of 24 points on Nov. 17 against Staten Island
- Also racked up career-high six threes on Nov. 17
- .819 career FT% - 2nd-highest all-time

34 AURORA DESHAIES

JR • 6-1 • FORWARD
SYRACUSE, N.Y.

| PPG | RPG | FG% | MIN |
|------|------|-----|------|
| 10.6 | 10.8 | 51% | 30.8 |



NOTES:

- NE10 All-Rookie Team/4x NE10 Rookie of the Week
- NE10 Player of the Week - Week 1
- Five career double-doubles
- Career-high 23 points and 16 rebounds, including a game-winner vs. Georgian Court on Nov. 14
- Second in conference with 10.8 rebounds per game.

KEY RESERVES

GABRIELLE STICKLE
SO • 5-6 • GUARD
Syracuse, N.Y.

1

KAMRYN KING
JR • 5-8 • GUARD
Old Saybrook, Conn.

21

LUZDALI OCASIO
GR • 5-4 • GUARD
Davenport, Fla.

23

ALYSSA STEVENSON
JR • 6-2 • FORWARD
Watertown, N.Y.

44

2021-22 GAME NOTES

2021-22 NEW HAVEN CHARGERS NUMERICAL ROSTER

| # | Name | Cl. | Po. | Ht. | Hometown / High School / Last School | Pronunciation Guide |
|----|-------------------|-----|-----|------|--|-----------------------------|
| 1 | Gabrielle Stickle | So. | G | 5-6 | Syracuse, N.Y. / Jamesville-Dewitt | |
| 2 | Brianna Diaz | Jr. | G | 5-6 | Bronx, N.Y. / Cardinal Spellman | |
| 3 | Aliyah Wright | Jr. | G | 5-4 | Albany, N.Y. / Colonie Central | uh-LEE-uh |
| 4 | Lyrik Jackson | Sr. | G | 5-8 | Syracuse, N.Y. / Syracuse Academy of Science/ Mohawk Valley CC | |
| 5 | Charlotte Bassett | Fr. | G | 5-6 | Glastonbury, Conn. / Glastonbury | |
| 10 | Azure Riley | So. | F | 5-9 | Windsor, Conn. / Windsor | |
| 11 | Camryn DeBose | Sr. | G | 5-10 | Wellington, Fla. / Wellington Community | duh-BOSE (like the speaker) |
| 12 | Briana Van Cleaf | Jr. | F | 5-9 | Staten Island, N.Y. / Notre Dame Academy / NYIT | |
| 13 | Kamryn Hammond | Sr. | G | 5-9 | Poughkeepsie, N.Y. / F.D. Roosevelt / Dutchess CC | |
| 15 | Marigona Bacaliu | Jr. | G | 5-9 | Worcester, Mass. / Putnam Science Academy / Concordia (NY) | |
| 21 | Kameryn King | Jr. | G | 5-8 | Old Saybrook, Conn. / Mercy | |
| 22 | Bionca Chambers | Gr. | G | 5-7 | Bronx, N.Y. / New Milford / Felician | |
| 23 | Luzdali Ocasio | Gr. | G | 5-4 | Davenport, Fla. / New Hampton | luz-DOLL-ee |
| 25 | Brie Pergola | Gr. | G | 5-8 | Torrington, Conn. / Torrington | per-GOAL-uh |
| 32 | Bianca Pendleton | Fr. | F | 6-0 | Accokeek, MD. / New Hope Academy | |
| 34 | Aurora Deshaies | Jr. | F | 6-1 | Syracuse, N.Y. / Bishop Ludden | |
| 44 | Alyssa Stevenson | Jr. | F | 6-2 | Watertown, N.Y. / South Jefferson Central | |

Head Coach: Debbie Buff (Cortland) – Third Season

Assistant Coach: Steve Bower (Sacred Heart '13) - Third Season

Graduate Assistant Coach: Haylee Hayward (Slippery Rock '20) - First Season



GABRIELLE STICKLE

1 Sophomore Guard



BRIANNA DIAZ

2 Junior Guard



ALIYAH WRIGHT

3 Junior Guard



LYRIK JACKSON

4 Senior Guard



CHARLOTTE BASSETT

5 Freshman Guard



AZURE RILEY

10 Sophomore Forward



CAMRYN DEBOSE

11 Senior Guard



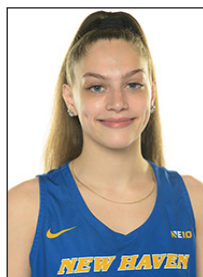
BRIANA VAN CLEAF

12 Junior Forward



KAMRYN HAMMOND

13 Senior Guard



MARIGONA BACALIU

15 Junior Guard



KAMERYN KING

21 Junior Guard



BIONCA CHAMBERS

22 Graduate Student Guard



LUZDALI OCASIO

23 Graduate Student Guard



BRIE PERGOLA

25 Graduate Student Guard



BIANCA PENDLETON

32 Freshman Forward



AURORA DESHAIES

34 Junior Forward



ALYSSA STEVENSON

44 Junior Forward



DEBBIE BUFF

HC Third Season



STEVE BOWER

AC Third Season



HAYLEE HAYWARD

GA First Season



VS



TALE OF THE TAPE

| | | |
|------------|------------------------------|------|
| 5-8 | OVERALL RECORD | 3-5 |
| L3 | CURRENT STREAK..... | L1 |
| 60.0 | POINTS PER GAME..... | 64.0 |
| 62.2 | OPP POINTS PER GAME | 66.8 |
| -2.2 | SCORING MARGIN | -2.8 |
| .369 | FIELD GOAL PCT | .380 |
| .369 | OPP FIELD GOAL PCT | .378 |
| .313 | 3-POINT FG PCT | .246 |
| .333 | OPP 3-POINT FG PCT | .322 |
| 5.0..... | 3PT MADE/GAME..... | 6.0 |
| .584 | FREE THROW PCT | .746 |
| 40.5 | REBOUNDS PER GAME..... | 42.6 |
| 38.5 | OPP. REBOUNDS PER GAME | 37.3 |
| +2.0..... | REBOUND MARGIN | +5.3 |
| 19.8 | TURNOVERS PER GAME | 18.0 |
| -0.6 | TURNOVER MARGIN | -4.5 |
| 10.2 | ASSISTS PER GAME | 14.5 |
| 8.5..... | STEALS PER GAME | 5.3 |
| 2.8..... | BLOCKS PER GAME | 5.9 |

STATISTICAL LEADERS

SCORING

| NEW HAVEN | NE10 GAMES |
|---------------------|-------------------|
| DeBose..... 16.5 | DeBose..... 17.0 |
| Pergola 11.2 | Chambers..... 8.2 |
| Deshaies 10.6 | Deshaies..... 7.7 |

REBOUNDING

| NEW HAVEN | NE10 GAMES |
|---------------------|--------------------|
| Deshaies 10.8 | Deshaies..... 9.7 |
| Van Cleaf 6.3 | Stevenson..... 6.4 |

ASSISTS

| NEW HAVEN | NE10 GAMES |
|------------------|-----------------|
| Pergola 35 | Pergola..... 13 |
| DeBose 26 | DeBose..... 12 |

STEALS

| NEW HAVEN | NE10 GAMES |
|------------------|----------------|
| DeBose 28 | DeBose..... 19 |
| Pergola 17 | King..... 7 |

BLOCKS

| NEW HAVEN | NE10 GAMES |
|-----------------|-------------------|
| Deshaies..... 7 | DeBose..... 3 |
| Chambers..... 6 | Van Cleaf 3 |

SEASON IN REVIEW

The Chargers fell to 5-8 on the year after dropping a heartbreaking 59-58 loss to Adelphi on Jan. 17 after the Panthers hit a go-ahead basket with five seconds left in the game.

SCOUTING NEW HAVEN

Wednesday's game will mark the first road game since Dec. 17 in which the Chargers won 62-57 over non-conference Bloomfield.

Last time the Charger's took the court, it ended in a heartbreaking 58-59 loss after a go-ahead bucket by Adelphi with five seconds left on the clock.

In consecutive games, the Chargers have battled back from a 15 point deficit despite being down a few key players.

The Chargers enter this weekday matchup against the Saint Anselm Hawks still looking for their first NE10 victory of the 2021-22 season, as they've previously have gone 0-7 to this point.

After three postponements and a holiday break, the Chargers will return back to Charger Gymnasium after splitting a pair of non-conference games.

After falling behind in the first half, the Chargers came out of the lockerroom with a sense of urgency and intensity, eventually grinding their way to a four point lead with five minutes left in the game.

However, a pair of clutch shots by the Panthers sent the shorthanded Chargers home empty handed

The Chargers shot 21-60 (35.0%) from the field during the game while going four of 16 from the perimeter (25.0%).

Adelphi ended the game shooting 23-65

(35.4%) but were held to just 4-15 (26.7%) from the arc, with two of those coming within the final minutes of play.

In a game that saw four lead changes down the final stretch, free throw enviously played a role as the Panthers went 9-12 (75.0%) from the line while the Chargers went 12-17 (70.6%).

Following a career-high in points last game, Camryn DeBose was a floor general in the 40 minutes she played, scoring 13 points while tallying five rebounds and two assists.

Not only has DeBose been a force on offense but she has impressed with her defense, as well, forcing three steals and blocking a pair of shots.

The star of the Charger's offense in this game, however, was freshman forward Bianca Pendleton, who set a new career-high of 15 points off 6-8 shooting while pulling down four rebounds, two of which on offense.

Starting in place of Deshaies in the game, was junior forward Alyssa Stevenson, who finished with an 8 point-8 rebound effort.

A pair of Kameryn King free throws with less than five minutes left gave the Chargers their largest lead of the game after her layup a minute earlier gave them their first lead.

Margiona Bacaliu made her second straight start after putting up a career-high eight points against Stonehill. Bacaliu connected on a three-pointer in the first quarter after assisting on a Gabrielle Stickle three the prior possession.

The Chargers got back in their groove despite missing Deshaies, outrebounding the Panthers, 43-40.

D2SIDA WBB POLLS (1/10-11/2022)

| EAST | W | L | Pts. | Prev | Last Weeks Results |
|--|----|---|------|------|--|
| 1. USciences (5) | 9 | 1 | 58 | 1 | WA Holy Family |
| 2. Southern N.H. | 9 | 2 | 54 | 2 | PPD, PPD, PPD |
| 3. Bentley (1) | 7 | 3 | 48 | 4 | PPD, WA Southern Conn. State |
| 4. Pace | 12 | 2 | 41 | 3 | LA Le Moyne, PPD, WH Adelphi |
| 5. Le Moyne | 7 | 2 | 35 | 6 | WH Pace, WH Stonehill |
| 6. Jefferson | 10 | 3 | 32 | 5 | LH Georgian Court, WH Dominican (N.Y.) |
| 7. Daemen | 5 | 3 | 23 | 7 | PPD |
| 8. Saint Anselm | 7 | 5 | 16 | 8 | PPD, PPD |
| 9. Post | 9 | 2 | 10 | 10 | PPD, PPD |
| 10. Chestnut Hill | 10 | 3 | NR | 9 | WA Wilmington (Del.), WH Felician |
| RV: Assumption 2, Southern Connecticut State 2 | | | | | |

New Haven forced 19 turnovers in the loss, turning those into 18 points on the other end.

The Chargers only scored 10 points on second chance opportunities and were outscored on the fastbreak, 15-9.

SCOUTING THE HAWKS

The Saint Anselm Hawks enter the matchup 8-6 on the season and 4-3 during conference play.

The Hawks are currently on a one-game losing streak after dropping a 60-63 loss to the Adelphi Panthers.

On offense, Saint Anselm is led by senior guard Peyton Steinman, who averages 19.9 points, 7.9 rebounds and 3.1 assists per game.

Steinman ranks second overall in the conference in points per game while her rebounds land her at seventh.

Steinman is coming off a 25 point- six rebound game in which she shot 9-23 from the field and 3-7 from three.

Sophomore guard Gabby Turco is close behind her with 16.0 points per game while leading the team from the perimeter, shooting 23 for 68 on the season.

Sophomore (freshman eligibility) guard Alexa Quirolo was named week NE10 rookie of the week after shooting 7-14, scoring 12 points in the two games played. She made six three-pointers on 10 attempts and was 4-4 from the line, while also reeling in 11 rebounds for the Hawks.

The Hawks have only seen eight players start at least one game this season with the most recent lineup being Steinman, Turco, Melanie Hoyt, Stephanie Jankovic and Katie Lemanski.

On defense, Saint Anselm averages 6.4 steals and 3.0 blocks.

The Hawks have three players with 10+ steals on the year and only one with 10+ blocks. Steinman leads the Hawks with 23 total steals while Hoyt leads with 13 blocks.

Saint Anselm ranks 8th in the NE10 with an average of 64.3 points per game, while shooting an 5th best 39.0 percent from the field.

The Hawks allow a NE10 fifth-least 61.6 points per game to their opponent on 39 percent shooting. As a whole, they rank 12th in the conference, averaging 36.8 rebounds for a -0.3 margin.

Saint Anselm boasts a relatively small and diverse roster comprised of eight guards and five forwards. The class makeup is divided into three freshmen, four sophomores, three juniors, and three seniors.

The Hawks are led by head coach Corey Boilard, who was named the seventh head women's basketball coach in Saint Anselm College history on June 8, 2017 and enters his fifth season on the Hilltop in 2021-22.

The owner of a 60-29 (.674) overall record since joining the Hawks prior to the 2017-18 season, Boilard has won an impressive 144 games as a collegiate head coach between Saint Anselm and Johnson & Wales (R.I.).

LAST TIME OUT

The University of New Haven women's basketball team dropped their third straight game in a heart-breaking 58-59 loss to the Adelphi Panthers on Martin Luther King Jr. Day. Two days after erasing a 15 point deficit to Stonehill, the Chargers once again battled back from double-digit points, tonight. Ultimately, the Chargers fell short as the loss now knocks New Haven down to 5-8 on the season, as New Haven continue their search for an NE10 win. Camryn DeBose saw 40 minutes of action, finishing with 13 points, five rebounds and two assists. Once again DeBose dazzled on the defensive end, recording three steals and two blocks. A new face led the Chargers on offense, freshman forward Bianca Pendleton. Pendleton dominated the paint, ending with 15 points on 6-8 shooting, 13 of which came in the second half. Junior forward Alyssa Stevenson, who started in place of Deshaies, led the team on the glass, pulling down eight rebounds while putting up eight points. Gabrielle Stickle tallied seven points in the effort, as her only two made field goals came from beyond the arc. Margiona Bacaliu was held to one basket, a three-pointer in the first quarter, but finished with five points, four rebounds and three assists. Kameryn King was also held to one made field goal, however, ended with six points after going a perfect 4-4 from the line.

The Panthers shot 23-65 (35.4%) from the field while being held to four made three-pointers out of 15 attempts. Despite trailing by 15 once again, the Chargers remained competitive, shooting 21-60 (35.0%) while shooting 4-16 from three. The Chargers made more free throws, going 12-17 (70.6%) from the line while the Panthers went 9-12 (75.0%). New Haven forced Adelphi into 19 turnovers, while totaling nine steals, in addition to four blocks. DeBose racked up three steals while Stickle and Briana Van Cleaf each tallied two steals. Of the four blocks in the game, DeBose was credited with two of them while Van Cleaf and Charlotte Basset both blocked one, as well. The Chargers outrebounded the Panthers 43-40, despite being outscored in the paint 34-28. Adelphi outscored the Chargers 15-9 on the fast break but New Haven scored more points off turnovers, 18-15. Both teams scored ten points stemming from second chance opportunities.

QUOTE FROM BUFF

"I could not be prouder of the team as I have been in the last two games," said head coach Debbie Buff. "I have never coached a team with as much adversity

CHARGERS RECORD WHEN...

| | |
|--------------|-----|
| Overall..... | 5-8 |
| Home..... | 1-5 |
| Away..... | 2-3 |
| Neutral..... | 2-0 |

BY MONTH

| | |
|---------------|-----|
| November..... | 4-2 |
| December..... | 1-4 |
| January..... | 0-2 |
| February..... | 0-0 |
| March..... | 0-0 |

BY DAYS OF THE WEEK

| | |
|----------------|-----|
| Monday..... | 0-1 |
| Tuesday..... | 0-2 |
| Wednesday..... | 1-1 |
| Thursday..... | 0-0 |
| Friday..... | 1-0 |
| Saturday..... | 1-3 |
| Sunday..... | 2-1 |

CLOSE GAMES

| | |
|--|-----|
| New Haven leads with 5:00 left in game..... | 3-2 |
| New Haven trails with 5:00 left in game..... | 2-6 |
| Tied with 5:00 left to play..... | 0-0 |
| Decided by five points or less..... | 2-4 |
| Decided by 6-10 points..... | 1-0 |
| Games decided by 11-plus points..... | 2-4 |
| Overtime..... | 1-0 |

OFFENSIVE OUTPUT

| | |
|--|-----|
| New Haven scores less than 50 pts..... | 0-1 |
| New Haven scores 50-59 pts..... | 1-4 |
| New Haven scores 60-69 pts..... | 3-2 |
| New Haven scores 70-79 pts..... | 2-0 |
| New Haven scores 80 or more pts..... | 0-0 |

DEFENSIVE OUTPUT

| | |
|---------------------------------------|-----|
| Opponent scores less than 50 pts..... | 2-0 |
| Opponent scores 50-59 pts..... | 1-2 |
| Opponent scores 60-69 pts..... | 1-4 |
| Opponent scores 70-79 pts..... | 1-1 |
| Opponent scores 80 or more pts..... | 0-1 |

NEW HAVEN FROM THE FIELD

| | |
|---|-----|
| New Haven shoots below 30%..... | 0-1 |
| New Haven shoots 30-40%..... | 3-6 |
| New Haven shoots 40-50%..... | 2-1 |
| New Haven shoots above 50%..... | 0-0 |
| New Haven shoots higher % than opp..... | 4-1 |
| New Haven shoots lower % than opp..... | 1-7 |
| New Haven shoots same % as opp..... | 0-0 |
| Makes more or same 3FGs than opp..... | 3-3 |
| Makes less 3FGs than opp..... | 2-5 |
| Makes more or same FTs than opp..... | 4-2 |
| Makes fewer FTs than opp..... | 1-6 |

REBOUNDING

| | |
|-------------------------------|-----|
| Outrebounded opponent..... | 3-4 |
| Outrebounded by opponent..... | 1-4 |
| Rebounds are equal..... | 1-0 |

MISCELLANEOUS

| | |
|---|-----|
| Leading at halftime..... | 1-1 |
| Trailing at halftime..... | 3-7 |
| Tied at halftime..... | 1-0 |
| Has two players or less in double figures..... | 1-6 |
| Has three players in double figures..... | 4-2 |
| Has four or more players in double figures..... | 1-0 |
| Commit same or less TO than opp..... | 4-3 |
| Commit more TO than opp..... | 1-5 |
| Games following a win..... | 2-3 |
| Games following a loss..... | 2-5 |

CHARGERS BY THE NUMBERS

| 10+ POINT GAMES | 19-20 | 21-22 | CAREER |
|-----------------|-------|-------|--------|
| Chambers* | 3 | 2 | 5 |
| DeBose | 15 | 13 | 42 |
| Deshaies | 17 | 5 | 22 |
| King | 0 | 2 | 2 |
| Ocasio | 2 | 0 | 2 |
| Pendleton | - | 1 | 1 |
| Pergola | 11 | 6 | 41 |
| Van Cleaf | 0 | 1 | 1 |

| 20+ POINT GAMES | 19-20 | 21-22 | CAREER |
|-----------------|-------|-------|--------|
| DeBose | 0 | 3 | 4 |
| Deshaies | 1 | 1 | 2 |
| Pergola | 1 | 1 | 3 |

| 10+ REB GAMES | 19-20 | 21-22 | CAREER |
|---------------|-------|-------|--------|
| DeBose | 1 | 0 | 2 |
| Deshaies | 6 | 9 | 15 |
| Pergola | 1 | 0 | 1 |
| Stevenson | 0 | 1 | 1 |
| Van Cleaf | 0 | 3 | 3 |

| 5+ ASSIST GAMES | 19-20 | 21-22 | CAREER |
|-----------------|-------|-------|--------|
| Ocasio | 6 | 0 | 7 |
| Pergola | 7 | 4 | 15 |

| 10+ ASSIST GAMES | 19-20 | 21-22 | CAREER |
|------------------|-------|-------|--------|
| Ocasio | 1 | 0 | 1 |

| 5+ STEAL GAMES | 19-20 | 21-22 | CAREER |
|----------------|-------|-------|--------|
| Chambers* | 1 | 1 | 1 |
| DeBose | 1 | 1 | 2 |
| Ocasio | 1 | 1 | 1 |
| Pergola | 1 | 0 | 1 |

| DOUBLE-DOUBLE (P/R) | 19-20 | 21-22 | CAREER |
|---------------------|-------|-------|--------|
| Deshaies | 3 | 4 | 7 |
| Pergola | 1 | 0 | 1 |

| POINTS LEADER | 19-20 | 21-22 | CAREER |
|---------------|-------|-------|--------|
| DeBose | 6 | 8 | 18 |
| Deshaies | 7 | 1 | 8 |
| Pendleton | - | 1 | 1 |
| Pergola | 7 | 2 | 13 |
| Van Cleaf | 0 | 1 | 1 |

| REBOUNDS LEADER | 19-20 | 21-22 | CAREER |
|-----------------|-------|-------|--------|
| DeBose | 3 | 0 | 5 |
| Deshaies | 11 | 8 | 19 |
| Ocasio | 1 | 0 | 1 |
| Pergola | 4 | 1 | 6 |
| Stevenson | 0 | 2 | 2 |
| Van Cleaf | 0 | 2 | 2 |

| GAMES STARTED | 21-22 | CAREER | CONSECUTIVE |
|---------------|-------|--------|-------------|
| Bacaliu | 2 | 2 | 2 |
| Chambers* | 8 | 8 | 7 |
| DeBose | 13 | 70 | 70 |
| Deshaies | 12 | 35 | 17 |
| Ocasio | 3 | 30 | 27 |
| King | 3 | 3 | 2 |
| Pergola | 11 | 89 | 82 |
| Stevenson | 2 | 2 | 1 |
| Van Cleaf | 11 | 11 | 3 |

* only games at New Haven, not previous school

as this team and they are fighting harder than ever and playing with so much heart and grit. We told them after the game that the future culture of our program is bright."

NE10 Players of the Week

AURORA DESHAIES (WEEK 1)

The Chargers ended the first weekend on a two-game win streak, largely in part to junior forward Aurora Deshaies, who was awarded NE10 Player of the Week honors for averaging a double-double over that span with 15.5 ppg and 14.0 rpg while shooting 56 percent from the field.

Deshaies put up eight points and grabbed 12 rebounds in the season opening 63-37 win over the Bloomfield Bears. She then followed that by shooting 11-16 (61 percent) against the Georgian Court Lions the next day to finish with a career-high 23 points and 16 rebounds, including nine on offense. To cap off her performance, she tipped in the game-winning shot at the buzzer to send the Chargers home with a 76-74 victory.

Deshaies totaled three double-doubles during her freshman year and has already tallied one, two games into the current season. Deshaies was a four-time NE10 Rookie of the Week in 2019, when she was also named to the NE10 All-Rookie Team at the conclusion of the season after leading the conference in field goal percentage.

CLEANING THE GLASS

The Chargers are back in their groove despite missing Deshaies for their last game, as the Chargers once again rebound their opponents.

New Haven still ranks second in the conference

with 14.2 offensive rebounds per game.

The Charger's late stage comeback was nearly complete after being backed by a career-high 15 points from Bianca Pendleton, as the Chargers outscored the Panthers 20-12 in the paint during the second half.

Aurora Deshaies continues to lead the team with 130 total rebounds or 10.8 rebounds per game, which ranks second in the conference.

Deshaies has reached 11+ rebounds in nine out of the 12 games played despite breaking a six straight streak.

Deshaies is one of six players in the conference with 100+ rebounds as she ranks second only to Meg Knollmeyer of SHNU.

As a team, the Chargers rank fifth in total rebounding while placing second in offensive rebounds (14.2) and 8th in defensive rebounds (26.4).

Junior forward Briana Van Cleaf hauled in a career-high 11 rebounds in the Nov. 28 win over Saint Thomas Aquinas. She is 15th in the conference with 6.7 rebounds per game.

So far, the Chargers have been outrebounded four times, outrebounded their opponents eight times and drew even on one occasion against Bloomfield.

BRIE PERGOLA

Pergola finished the 2019-20 season with two top-10 single season records. She shot 87.9 percent from the free throw line, the second highest mark of any season in program history, and shot 38.4 percent from three-point range, which ranks eighth all-time.

Pergola is currently averaging 11.2 points per game and 3.2 assists, the latter ranking 10th in the conference.

TEAM STATISTICS

| | All Games | Home | Away | Neutral | Non-Conf. | Conf. Games | NE10 Champ. |
|-----------------------|-----------|---------|---------|---------|-----------|-------------|-------------|
| RECORD | 5-8 | 1-5 | 2-3 | 2-0 | 5-1 | 0-7 | 0-0 |
| SCORING | 780 | 341 | 300 | 139 | 390 | 390 | 0 |
| Points per game | 60.0 | 56.8 | 60.0 | 69.5 | 65 | 55.7 | 0 |
| Scoring margin | -2.2 | -4.9 | -5.4 | +14 | +8.2 | -11 | 0 |
| FIELD GOALS-ATT | 288-780 | 127-354 | 112-311 | 49-115 | 101-369 | 147-411 | 0-0 |
| Field goal pct | .369 | .359 | .360 | .426 | .274 | .358 | .000 |
| 3 POINT FG-ATT | 65-207 | 31-98 | 29-93 | 5-16 | 30-95 | 35-112 | 0-0 |
| 3-point FG pct | .314 | .316 | .312 | .313 | .316 | .313 | .000 |
| 3-pt FG made per game | 5.0 | 5.2 | 5.8 | 2.5 | 5.0 | 5.0 | 0 |
| FREE THROWS-ATT | 139-238 | 56-98 | 47-78 | 36-62 | 78-138 | 61-100 | 0-0 |
| Free throw pct | .584 | .571 | .602 | .581 | .565 | .610 | .000 |
| REBOUNDS | 527 | 230 | 217 | 80 | 262 | 265 | 0 |
| Rebounds per game | 40.5 | 38.3 | 43.4 | 40.0 | 43.7 | 37.9 | 0 |
| Rebounding margin | +2.0 | +2.8 | +2.4 | +0.3 | +1.8 | +0.5 | 0 |
| ASSISTS | 133 | 58 | 51 | 24 | 69 | 64 | 0 |
| Assists per game | 10.2 | 9.7 | 10.2 | 12.0 | 11.5 | 9.1 | 0 |
| TURNOVERS | 258 | 114 | 97 | 47 | 117 | 141 | 0 |
| Turnovers per game | 19.8 | 19.0 | 19.4 | 23.5 | 19.5 | 20.1 | 0 |
| Turnover margin | -0.6 | -0.3 | -2.6 | +3.5 | -1.7 | -2.1 | 0 |
| Assist/turnover ratio | 0.5 | 0.5 | 0.4 | 0.5 | 0.5 | 0.5 | 0 |
| STEALS | 111 | 49 | 41 | 21 | 49 | 62 | 0 |
| Steals per game | 8.5 | 8.2 | 8.2 | 10.5 | 8.2 | 8.9 | 0 |
| BLOCKS | 37 | 17 | 15 | 5 | 23 | 14 | 0 |
| Blocks per game | 2.8 | 2.8 | 3.0 | 2.5 | 3.8 | 2.0 | 0 |



NE10

2021-22 NORTHEAST-10 CONFERENCE STANDINGS

For Games Through: Jan. 18, 2022

| NORTHEAST | NE10 | | | OVERALL | | |
|-----------------|------|---|------|---------|---|------|
| | W | L | PCT | W | L | PCT |
| Southern N.H. | 4 | 1 | .800 | 10 | 2 | .833 |
| Bentley | 5 | 2 | .714 | 7 | 4 | .636 |
| Saint Anselm | 4 | 3 | .571 | 8 | 6 | .571 |
| Stonehill | 4 | 5 | .444 | 5 | 6 | .455 |
| Assumption | 2 | 5 | .286 | 5 | 7 | .417 |
| Franklin Pierce | 1 | 3 | .250 | 5 | 5 | .500 |
| Saint Michael's | 1 | 3 | .250 | 3 | 7 | .300 |
| SOUTHWEST | NE10 | | | OVERALL | | |
| | W | L | PCT | W | L | PCT |
| Pace | 7 | 1 | .875 | 13 | 2 | .867 |
| Le Moyne | 6 | 1 | .857 | 8 | 2 | .800 |
| So. Connecticut | 3 | 3 | .500 | 6 | 6 | .500 |
| Adelphi | 4 | 5 | .444 | 6 | 8 | .429 |
| American Int'l | 3 | 4 | .429 | 6 | 6 | .500 |
| Saint Rose | 2 | 3 | .400 | 3 | 6 | .333 |
| New Haven | 0 | 7 | .000 | 5 | 8 | .385 |

SCORING BREAKDOWN (NEW HAVEN/OPPONENT)

| Game | Pts in Paint | Pts off TOs | 2nd ch. Pts. | 1st Half Pts. | 2nd Half Pts. | OT | FT | FB | Starter | Bench |
|-----------------------------|--------------|-------------|--------------|---------------|---------------|------|---------|--------|---------|---------|
| BLOOMFIELD | 32-14 | 20-8 | 12-5 | 40-10 | 23-27 | -- | 14-14 | 11-6 | 50-15 | 13-22 |
| GEORGIAN COURT | 40-26 | 25-17 | 16-23 | 36-43 | 40-31 | -- | 22-9 | 6-15 | 69-70 | 7-4 |
| at College of Staten Island | 30-14 | 16-13 | 22-14 | 33-34 | 28-27 | 11-3 | 7-18 | 0-6 | 64-35 | 8-29 |
| at Le Moyne* | 20-26 | 6-13 | 16-13 | 26-33 | 22-34 | -- | 13-22 | 4-17 | 44-58 | 4-7 |
| PACE* | 30-22 | 13-10 | 2-4 | 22-45 | 29-27 | - | 4-18 | 2-9 | 36-46 | 15-26 |
| SAINT THOMAS AQUINAS | 26-16 | 10-11 | 18-0 | 25-30 | 31-13 | - | 12-1 | 0-4 | 50-23 | 6-20 |
| at Southern Conn. State* | 36-14 | 19-24 | 15-9 | 26-39 | 38-44 | - | 5-16 | 4-13 | 51-75 | 13-8 |
| at Saint Rose* | 22-16 | 20-19 | 18-11 | 31-37 | 23-21 | - | 11-10 | 0-2 | 33-35 | 21-23 |
| AMERICAN INT'L* | 26-28 | 20-23 | 12-0 | 24-30 | 30-36 | - | 11-19 | 6-8 | 39-40 | 15-26 |
| at Bloomfield | 30-18 | 18-11 | 8-10 | 28-28 | 34-29 | - | 6-11 | 0-0 | 54-37 | 8-20 |
| CHESTNUT HILL | 28-18 | 21-18 | 9-6 | 32-28 | 29-28 | - | 12-22 | 10-15 | 53-51 | 8-15 |
| at Bridgeport (PPD) | - | - | - | - | - | - | - | - | - | - |
| SAINT MICHAEL'S* (PPD) | - | - | - | - | - | - | - | - | - | - |
| STONEHILL* | 30-34 | 20-17 | 11-10 | 24-31 | 37-33 | - | 5-9 | 5-10 | 54-62 | 7-2 |
| ADELPHI* | 28-34 | 18-15 | 10-10 | 27-35 | 24-31 | - | 12-9 | 9-15 | 34-50 | 24-9 |
| at Saint Anselm* | - | - | - | - | - | - | - | - | - | - |
| ASSUMPTION* | - | - | - | - | - | - | - | - | - | - |
| SOUTHERN N.H.* | - | - | - | - | - | - | - | - | - | - |
| at Franklin Pierce* | - | - | - | - | - | - | - | - | - | - |
| at Pace* | - | - | - | - | - | - | - | - | - | - |
| LE MOYNE* | - | - | - | - | - | - | - | - | - | - |
| SAINT ROSE* | - | - | - | - | - | - | - | - | - | - |
| at Bentley* | - | - | - | - | - | - | - | - | - | - |
| at American Int'l* | - | - | - | - | - | - | - | - | - | - |
| SOUTHERN CONN. STATE* | - | - | - | - | - | - | - | - | - | - |
| at Adelphi* | - | - | - | - | - | - | - | - | - | - |
| TOTAL | 378-280 | 226-199 | 169-115 | 374-423 | 392-381 | 11/3 | 134/178 | 57/116 | 631/597 | 149/211 |

CLASS SCORING

| | Fr. | So. | Jr. | Sr./Gr. |
|-----------------------------|-----|-----|-----|---------|
| BLOOMFIELD | 3 | - | 21 | 39 |
| GEORGIAN COURT | - | 2 | 23 | 51 |
| at College of Staten Island | - | 2 | 18 | 52 |
| at Le Moyne* | 2 | 2 | 12 | 32 |
| PACE* | 7 | 3 | 15 | 26 |
| SAINT THOMAS AQUINAS | - | - | 20 | 36 |
| at Southern Conn. State* | - | - | 36 | 28 |
| at Saint Rose* | - | - | 14 | 40 |
| AMERICAN INT'L | - | - | 15 | 39 |
| at Bloomfield | - | - | 24 | 38 |
| CHESTNUT HILL | 2 | - | 37 | 22 |
| at Bridgeport (PPD) | - | - | - | - |
| SAINT MICHAEL'S* (PPD) | - | - | - | - |
| STONEHILL* | - | - | 33 | 28 |
| ADELPHI* | 17 | 7 | 21 | 13 |
| at Saint Anselm* | - | - | - | - |
| ASSUMPTION* | - | - | - | - |
| SOUTHERN N.H.* | - | - | - | - |
| at Franklin Pierce* | - | - | - | - |
| at Pace* | - | - | - | - |
| LE MOYNE* | - | - | - | - |
| SAINT ROSE* | - | - | - | - |
| at Bentley* | - | - | - | - |
| at American Int'l* | - | - | - | - |
| SOUTHERN CONN. STATE* | - | - | - | - |
| at Adelphi* | - | - | - | - |
| TOTAL | 31 | 16 | 289 | 444 |

2021-22 GAME NOTES

ence.

Pergola set a career-high with 24 points, as well as six three-pointers made, against the College of Staten Island, earlier in the season.

Her previous career-high was 20 points, last vs. Goldey-Beacom on Jan. 1, 2020. Her high in three-pointers was four, last accomplished at Chestnut Hill on Dec. 11, 2019.

She tallied her fifth game with 10 or more points on Nov. 28 against the Saint Thomas Aquinas Spartans, leading the team with 18 points while going 3-6 from three.

LOCKDOWN DEFENSE

The Chargers started the season off by holding the Bloomfield Bears to only 37 points, two short of their season-low in the 2019-20 season.

On Nov. 28, the Chargers held the Spartans to 43 points, second lowest allowed this season after Bloomfield.

New Haven has held their opponents to 36.9 percent shooting on the season, which ranks fifth in the NE10. The Chargers, however, allow a conference 12th best, 33.3 percent shooting from the perimeter.

The team has combined for 111 steals and and 37 blocks, so far this season.

The Chargers are 2-0 when holding opponents to less than 50 points and are 4-1 when finishing with a better

field goal percentage.

The squad also placed second in turnovers forced with an average of 19.3 per game.

BEYOND THE ARC

Junior Marigona Bacaliu connected on a three-pointer against Bloomfield in week one, to score her first career points as a member of the Chargers.

The Chargers shot a season best 9-30 from three in the 72-64 overtime win over the College of Staten Island, largely led by Brie Pergola's career-high game.

Gabrielle Stickle and Brianna Diaz both connected on three-pointers for their first of the season, against Pace on Nov. 24.

The Chargers hit back-to-back three-pointers twice in the second half of the Dec. 1 loss to Southern Conn. State.

Briana Van Cleaf made it rain against Chestnut Hill on Dec. 19, shooting 4-6 from the arc.

Stickle and Bacaliu connected on back-to-back three-pointers in the first quarter against Adelphi on Jan. 17.

TIS' THE SEASON OF GIVING

New Haven has dished out 133 assists to start the season. Leading the campaign is graduate student Brie Pergola who is ranked 10th in the NE10 with an average of 3.2 assists and tied for fifth with a season total of 35.

GAME-BY-GAME STARTERS (BY MIN)

| Game | 1 | 2 | 3 | 4 | 5 |
|----------------------------|--------------|----------------|----------------|----------------|----------------|
| BLOOMFIELD | DeBose (33) | Pergola (31) | Deshaies (27) | Van Cleaf (25) | Chambers (19) |
| GEORGIAN COURT | DeBose (40) | Deshaies (37) | Pergola (37) | Chambers (22) | Van Cleaf (21) |
| COLLEGE OF STATEN ISLAND | DeBose (45) | Pergola (45) | Van Cleaf (38) | Chambers (34) | Deshaies (26) |
| LE MOYNE | Pergola (39) | Deshaies (37) | DeBose (30) | Van Cleaf (30) | Chambers (21) |
| PACE | DeBose (37) | Pergola (36) | Deshaies (29) | Chambers (24) | Van Cleaf (23) |
| SAINT THOMAS AQUINAS | Pergola (40) | DeBose (38) | Van Cleaf (37) | Deshaies (36) | Chambers (16) |
| SOUTHERN CONNECTICUT STATE | Pergola (35) | Deshaies (33) | DeBose (31) | Chambers (20) | Van Cleaf (18) |
| SAINT ROSE | DeBose (35) | Pergola (33) | Deshaies (33) | Ocasio (27) | Van Cleaf (17) |
| AMERICAN INTERNATIONAL | Pergola (38) | DeBose (37) | Deshaies (34) | Stevenson (10) | King (8) |
| BLOOMFIELD | Pergola (31) | DeBose (27) | Deshaies (26) | Chambers (21) | Ocasio (14) |
| CHESTNUT HILL | Pergola (37) | Van Cleaf (35) | Deshaies (29) | Ocasio (28) | DeBose (21) |
| BRIDGEPORT (PPD) | - | - | - | - | - |
| SAINT MICHAEL'S (PPD) | - | - | - | - | - |
| STONEHILL | DeBose (40) | King (39) | Van Cleaf (32) | Bacaliu (26) | Deshaies (22) |
| ADELPHI | DeBose (40) | King (30) | Bacaliu (29) | Stevenson (25) | Van Cleaf (23) |
| SAINT ANSELM | - | - | - | - | - |
| ASSUMPTION | - | - | - | - | - |
| SOUTHERN NEW HAMPSHIRE | - | - | - | - | - |
| FRANKLIN PIERCE | - | - | - | - | - |
| PACE | - | - | - | - | - |
| LE MOYNE | - | - | - | - | - |
| SAINT ROSE | - | - | - | - | - |
| BENTLEY | - | - | - | - | - |
| AMERICAN INTERNATIONAL | - | - | - | - | - |
| SOUTHERN CONNECTICUT STATE | - | - | - | - | - |
| ADELPHI | - | - | - | - | - |

CHARGERS IN THE NE10

TEAM STATS

| CATEGORY | RANK | STAT |
|--------------------|------|------|
| SCORING OFFENSE | 10th | 60.0 |
| SCORING DEFENSE | 10th | 62.2 |
| FG % | 9th | 36.9 |
| FG % DEFENSE | 5th | 36.9 |
| FT % | 14th | 57.9 |
| 3-PT FG % | 4th | 31.4 |
| 3-PT FG % DEFENSE | 12th | 33.3 |
| ASSISTS/GAME | 13th | 10.2 |
| TOTAL REBOUNDING | 5th | 40.5 |
| OFFENSIVE REB. | 2nd | 14.2 |
| DEFENSIVE REB. | 8th | 26.4 |
| REBOUNDING MARGIN | 7th | +2.1 |
| BLOCKED SHOTS/GAME | 11th | 2.8 |
| STEALS/GAME | 5th | 8.6 |

INDIVIDUAL STATS (TOP 15)

| PLAYER | RANK | STAT |
|-----------------------|--------|---------|
| POINTS PER GAME | | |
| Camryn DeBose | 6th | 16.5 |
| REBOUNDS PER GAME | | |
| Aurora Deshaies | 2nd | 10.8 |
| Briana Van Cleaf | 13th | 6.8 |
| ASSISTS PER GAME | | |
| Brie Pergola | 10th | 3.2 |
| BLOCKS PER GAME | | |
| STEALS PER GAME | | |
| Camryn DeBose | 4th | 2.2 |
| FIELD GOAL PERCENTAGE | | |
| Aurora Deshaies | 2nd | 50.9 |
| 3-POINT FG PERCENTAGE | | |
| Camryn DeBose | 4th | 38.6 |
| Brie Pergola | 10th | 36.7 |
| 3-POINT FG MADE/ GAME | | |
| Camryn DeBose | 12th | 1.7-4.4 |
| Brie Pergola | T-14th | 1.6-4.5 |
| FREE THROW % | | |
| FREE THROW MADE/GAME | | |
| Camryn DeBose | 15th | 2.8-4.3 |

SEASON RECORDS

POINTS

| | | |
|--------------------------|----------|---------|
| 1. Joy Jeter..... | 648..... | 1988-89 |
| 2. Joy Jeter..... | 577..... | 1985-86 |
| 3. Aquillin Hayes..... | 576..... | 2014-15 |
| Ashley Hilton..... | 576..... | 2006-07 |
| 5. Charlene Taylor..... | 557..... | 1988-89 |
| 6. Joy Jeter..... | 556..... | 1987-88 |
| 7. Jennifer Davis..... | 540..... | 1995-96 |
| 8. Niketa Harris..... | 534..... | 2001-02 |
| 9. Debbie Moore..... | 533..... | 1992-93 |
| 10. Briana Bradford..... | 527..... | 2015-16 |

POINTS PER GAME (MIN. 20 GAMES)

| | | |
|--------------------------|-----------|---------|
| 1. Joy Jeter..... | 20.6..... | 1985-86 |
| 2. Niketa Harris..... | 20.5..... | 2001-02 |
| 3. Joy Jeter..... | 20.3..... | 1988-89 |
| 4. Debbie Moore..... | 19.7..... | 1992-93 |
| 5. Jennifer Davis..... | 19.3..... | 1995-96 |
| 6. Briana Bradford..... | 18.8..... | 2015-16 |
| 7. Aquillin Hayes..... | 18.6..... | 2014-15 |
| Ashley Hilton..... | 18.6..... | 2006-07 |
| 9. Debbie Moore..... | 18.0..... | 1991-92 |
| 10. Charlene Taylor..... | 17.4..... | 1988-89 |

FIELD GOALS

| | | |
|-------------------------|----------|---------|
| 1. Joy Jeter..... | 231..... | 1988-89 |
| 2. Aquillin Hayes..... | 230..... | 2014-15 |
| 3. Jennifer Davis..... | 228..... | 1995-96 |
| 4. Charlene Taylor..... | 225..... | 1988-89 |
| 5. Joy Jeter..... | 219..... | 1985-86 |
| 6. Ashley Hilton..... | 216..... | 2006-07 |
| 7. Joy Jeter..... | 211..... | 1986-87 |
| 8. Niketa Harris..... | 209..... | 2001-02 |
| 9. Joy Jeter..... | 208..... | 1987-88 |
| 10. Debbie Moore..... | 204..... | 1992-93 |

FIELD GOAL PERCENTAGE (MIN. 100 ATTEMPTS)

| | | |
|----------------------------------|-----------|---------|
| 1. Shannon Driscoll (74-122).... | .607..... | 1991-92 |
| 2. Amanda Freeman (128-216)..... | .593..... | 2004-05 |
| 3. Cathy Pavell (165-282)..... | .585..... | 1982-83 |
| 4. Aurora Deshaies (130-230) .. | .565..... | 2019-20 |
| 5. Nyree Frazier (69-125)..... | .552..... | 2004-05 |
| 6. Phoenicia Wright (73-136) .. | .537..... | 1998-99 |
| 7. Nikki Carroll (93-175)..... | .531..... | 2008-09 |
| 8. Katia Oge (62-115)..... | .529..... | 2018-19 |
| 9. Nicole Myrick (114-216)..... | .528..... | 1994-95 |
| 10. Micah Wormack (152-281)..... | .527..... | 2018-19 |

THREE-POINT FIELD GOALS MADE

| | | |
|-------------------------------|---------|---------|
| 1. Becky Snow..... | 63..... | 1999-00 |
| 2. Becky Snow..... | 59..... | 1997-98 |
| 3. Becky Snow..... | 57..... | 1996-97 |
| 4. Becky Snow..... | 56..... | 1998-99 |
| 5. Briana Bradford..... | 53..... | 2015-16 |
| 6. Anh-Dao Tran..... | 52..... | 2012-13 |
| 7. Dominique Stellmacher..... | 48..... | 2009-10 |
| 8. Audrey Cunningham..... | 47..... | 2010-11 |
| 9. Keri-Anne Jetter..... | 45..... | 2006-07 |
| 10. Lauren Hood..... | 43..... | 2005-06 |

THREE-POINT FIELD GOAL PERCENTAGE (min. 25 made)

| | | |
|-------------------------------|-----------|---------|
| 1. Briana Rende (26-60)..... | .433..... | 2005-06 |
| 2. Anh-Dao Tran (37-88)..... | .420..... | 2010-11 |
| 3. Karen Hill (27-67)..... | .403..... | 1987-88 |
| 4. Bria Moore (32-80)..... | .400..... | 2011-12 |
| Ashley Hilton (26-65)..... | .400..... | 2005-06 |
| Kia Nealy (32-80)..... | .400..... | 2002-03 |
| 7. Ashley Hilton (27-68)..... | .397..... | 2006-07 |
| 8. Bria Moore (28-71)..... | .394..... | 2013-14 |
| 9. Brie Pergola (33-86)..... | .384..... | 2019-20 |
| 10. Nikita Reddy (35-93)..... | .376..... | 2012-13 |

FREE THROWS

| | | |
|-------------------------|----------|---------|
| 1. Joy Jeter..... | 185..... | 1988-89 |
| 2. Christine Huber..... | 140..... | 1998-99 |
| Joy Jeter..... | 140..... | 1987-88 |
| 4. Joy Jeter..... | 139..... | 1985-86 |
| 5. Briana Bradford..... | 134..... | 2015-16 |
| 6. Ashley Hilton..... | 117..... | 2006-07 |
| 7. Niketa Harris..... | 116..... | 2001-02 |
| 8. Aquillin Hayes..... | 115..... | 2014-15 |
| 9. Alexandria Kerr..... | 114..... | 2018-19 |
| Lauren Hood..... | 114..... | 2008-09 |

FREE THROW PERCENTAGE (MIN. 50 MADE)

| | | |
|----------------------------------|-----------|---------|
| 1. Anh-Dao Tran (62-69)..... | .899..... | 2011-12 |
| 2. Brie Pergola (58-66)..... | .879..... | 2019-20 |
| 3. Cathy Pavell (76-87)..... | .874..... | 1982-83 |
| 4. Lauren Hebert (92-107)..... | .860..... | 2015-16 |
| 5. Anh-Dao Tran (68-81)..... | .840..... | 2012-13 |
| 6. Kyle Verrett (53-64)..... | .828..... | 2000-01 |
| Karen Hill (53-64)..... | .828..... | 1986-87 |
| 8. Briana Rende (84-102)..... | .824..... | 2007-08 |
| 9. Briana Bradford (93-113)..... | .823..... | 2013-14 |
| 10. Bria Moore (69-84)..... | .821..... | 2011-12 |

REBOUNDS

| | | |
|-------------------------|----------|---------|
| 1. Joy Jeter..... | 429..... | 1988-89 |
| 2. Joy Jeter..... | 378..... | 1985-86 |
| 3. Joy Jeter..... | 376..... | 1987-88 |
| 4. Tiesha Grace..... | 362..... | 1995-96 |
| 5. Cathy Pavell..... | 319..... | 1982-83 |
| 6. Joy Jeter..... | 312..... | 1986-87 |
| 7. Tiesha Grace..... | 301..... | 1994-95 |
| 8. Maria Magoulas..... | 295..... | 1980-81 |
| 9. Aquillin Hayes..... | 291..... | 2014-15 |
| 10. Arlevia Samuel..... | 287..... | 1992-93 |

ASSISTS

| | | |
|-------------------------|----------|---------|
| 1. Moe Stevens..... | 176..... | 1995-96 |
| 2. Charlene Taylor..... | 175..... | 1987-88 |
| 3. Helin Marte..... | 174..... | 2009-10 |
| 4. Charlene Taylor..... | 171..... | 1986-87 |
| 5. Moe Stevens..... | 169..... | 1994-95 |
| 6. Kristy Conyers..... | 165..... | 1999-00 |
| 7. Charlene Taylor..... | 162..... | 1988-89 |
| 8. Helin Marte..... | 152..... | 2008-09 |
| 9. Cathy Alston..... | 151..... | 1981-82 |
| 10. Helin Marte..... | 137..... | 2007-08 |
| Carolyn Bell..... | 137..... | 1986-87 |

BLOCKED SHOTS

| | | |
|------------------------|---------|---------|
| 1. Joy Jeter..... | 81..... | 1988-89 |
| 2. Joy Jeter..... | 62..... | 1987-88 |
| 3. Arrette Harvey..... | 59..... | 1989-90 |
| 4. Joy Jeter..... | 56..... | 1986-87 |
| 5. Sonja Beamon..... | 54..... | 1986-87 |
| 6. Joy Jeter..... | 47..... | 1985-86 |
| 7. Micah Wormack..... | 45..... | 2016-17 |
| 8. Micah Wormack..... | 43..... | 2019-20 |
| 9. Jill Baranger..... | 42..... | 2009-10 |
| 10. Mary Doherty..... | 41..... | 1984-85 |

STEALS

| | | |
|-------------------------|----------|---------|
| 1. Debbie Moore..... | 138..... | 1992-93 |
| 2. Charlene Taylor..... | 134..... | 1987-88 |
| 3. Charlene Taylor..... | 100..... | 1988-89 |
| 4. Charlene Taylor..... | 96..... | 1985-86 |
| 5. Kristy Conyers..... | 93..... | 1998-99 |
| 6. Alexandria Kerr..... | 91..... | 2018-19 |
| Kristy Conyers..... | 91..... | 1999-00 |
| 8. Charlene Taylor..... | 89..... | 1986-87 |
| 9. Moe Stevens..... | 87..... | 1993-94 |
| 10. Carolyn Bell..... | 82..... | 1986-87 |
| Debbie Moore..... | 82..... | 1991-92 |
| Cathy Alston..... | 82..... | 1983-84 |

CAREER RECORDS

SCORING (1,000 POINT CLUB)

| | | |
|----------------------------------|-------|---------|
| 1. Joy Jeter..... | 2,299 | 1985-89 |
| 2. Charlene Taylor..... | 1,851 | 1985-89 |
| 3. Niketa Harris..... | 1,673 | 1998-02 |
| 4. Debbie Moore..... | 1,667 | 1989-93 |
| 5. Ashley Hilton..... | 1,637 | 2003-07 |
| 6. Jennifer Davis..... | 1,622 | 1992-96 |
| 7. Becky Snow..... | 1,551 | 1996-00 |
| 8. Briana Bradford..... | 1,545 | 2012-16 |
| 9. Alexandria Kerr..... | 1,500 | 2015-19 |
| 10. Christine Huber..... | 1,453 | 1996-00 |
| 11. Aquillin Hayes..... | 1,392 | 2011-15 |
| 12. Lauren Hood..... | 1,366 | 2005-09 |
| 13. Tiesha Grace..... | 1,347 | 1994-98 |
| 14. Cathy Alston..... | 1,310 | 1980-84 |
| 15. Bria Moore..... | 1,245 | 2011-15 |
| 16. Sonja Beamon..... | 1,208 | 1983-87 |
| 17. Nikki (Tierney) Devaney..... | 1,133 | 1990-94 |
| 18. Tristan Jackson..... | 1,114 | 2003-07 |
| 19. Arnetha Eaddy..... | 1,062 | 1981-85 |
| 20. Micah Wormack..... | 1,022 | 2016-20 |

FIELD GOALS

| | | |
|-------------------------|-----|---------|
| 1. Joy Jeter..... | 869 | 1985-89 |
| 2. Charlene Taylor..... | 782 | 1985-89 |
| 3. Jennifer Davis..... | 719 | 1992-96 |
| 4. Debbie Moore..... | 637 | 1989-93 |
| 5. Niketa Harris..... | 632 | 1998-02 |
| 6. Ashley Hilton..... | 594 | 2003-07 |
| 7. Aquillin Hayes..... | 559 | 2011-15 |
| 8. Becky Snow..... | 549 | 1996-00 |
| 9. Christine Huber..... | 544 | 1996-00 |
| 10. Tiesha Grace..... | 541 | 1994-98 |

FIELD GOAL PERCENTAGE (MIN. 200 MADE)

| | | |
|------------------------------------|------|---------|
| 1. Amanda Freeman (351-674)..... | .521 | 2002-06 |
| 2. Nicole Myrick (277-551)..... | .503 | 1993-96 |
| 3. Joy Jeter (869-1788)..... | .486 | 1985-89 |
| 4. Micah Wormack (432-896)..... | .482 | 2016-20 |
| 5. Niketa Harris (632-1319)..... | .479 | 1998-02 |
| 6. Ashley Hilton (594-1259)..... | .472 | 2003-07 |
| 7. Dana Hodges (255-543)..... | .470 | 1981-85 |
| 8. Aquillin Hayes (559-1195)..... | .468 | 2011-15 |
| 9. Phoenicia Wright (326-700)..... | .466 | 1998-02 |
| 10. Tristan Jackson (423-929)..... | .455 | 2003-07 |
| 11. Jill Angotta (354-779)..... | .454 | 2000-04 |

THREE-POINT FIELD GOALS

| | | |
|----------------------------------|-----|----------------|
| 1. Becky Snow..... | 235 | 1996-00 |
| 2. Briana Bradford..... | 164 | 2012-16 |
| 3. Briana Rende..... | 140 | 2005-09 |
| 4. Anh-Dao Tran..... | 130 | 2010-13 |
| 5. Jennifer Shoemaker..... | 126 | 2003-07 |
| 6. Audrey Cunningham..... | 102 | 2010-12, 13-14 |
| 7. Lauren Hood..... | 100 | 2005-09 |
| Bria Moore..... | 100 | 2011-15 |
| 9. Elizabeth Cruso..... | 96 | 2011-15 |
| 10. Nikki (Tierney) Devaney..... | 95 | 1990-94 |

THREE-POINT FIELD GOAL PERCENTAGE (MIN. 50 MADE)

| | | |
|-----------------------------------|------|---------|
| 1. Kia Nealy (53-139)..... | .381 | 2002-04 |
| 2. Briana Rende (140-390)..... | .359 | 2005-09 |
| 3. Anh-Dao Tran (130-370)..... | .351 | 2010-13 |
| 4. Ashley Hilton (72-205)..... | .351 | 2003-07 |
| 5. Becky Snow (235-682)..... | .345 | 1996-00 |
| 6. Cori Harrington (78-227)..... | .344 | 1998-02 |
| 7. Charlene Taylor (55-164)..... | .335 | 1985-89 |
| 8. Lauren Hood (100-300)..... | .333 | 2005-09 |
| 9. Bria Moore (100-308)..... | .325 | 2011-15 |
| 10. Elizabeth Cruso (96-296)..... | .324 | 2011-15 |

FREE THROWS

| | | |
|----------------------------------|-----|---------|
| 1. Joy Jeter..... | 560 | 1985-89 |
| 2. Niketa Harris..... | 409 | 1998-02 |
| 3. Briana Bradford..... | 401 | 2012-16 |
| 4. Ashley Hilton..... | 377 | 2003-07 |
| 5. Christine Huber..... | 365 | 1996-00 |
| 6. Alexandria Kerr..... | 346 | 2015-19 |
| 6. Lauren Hood..... | 346 | 2005-09 |
| 8. Debbie Moore..... | 325 | 1989-93 |
| 9. Bria Moore..... | 285 | 2011-15 |
| 10. Nikki (Tierney) Devaney..... | 282 | 1990-94 |

FREE THROW PERCENTAGE (MIN. 150 MADE)

| | | |
|---------------------------------------|-------------|-------------------|
| 1. Anh-Dao Tran (170-204)..... | .833 | 2010-13 |
| 2. Brie Pergola (194-242)..... | .802 | 2017-pres. |
| 3. Karen Hill (164-211)..... | .777 | 1984-88 |
| 4. Briana Bradford (401-526)..... | .762 | 2012-16 |
| 5. Briana Rende (260-342)..... | .760 | 2005-09 |
| 6. Becky Snow (218-288)..... | .757 | 1996-00 |
| 7. Bria Moore (285-377)..... | .756 | 2011-15 |
| 8. Lauren Hood (346-460)..... | .752 | 2005-09 |
| 9. Lauren Hebert (233-310)..... | .752 | 2012-16 |
| 10. Tristan Jackson (264-352)..... | .750 | 2003-07 |
| 11. Adelina Gentry (238-323)..... | .737 | 2002-06 |

REBOUNDING

| | | |
|--------------------------|-------|---------|
| 1. Joy Jeter..... | 1,486 | 1985-89 |
| 2. Tiesha Grace..... | 1,047 | 1994-98 |
| 3. Phoenicia Wright..... | 1,006 | 1998-02 |
| 4. Aquillin Hayes..... | 945 | 2011-15 |
| 5. Sonja Beamon..... | 901 | 1983-87 |
| 6. Tristan Jackson..... | 824 | 2003-07 |
| 7. Debbie Moore..... | 817 | 1989-93 |
| 8. Alexandria Kerr..... | 814 | 2015-19 |
| 9. Ashley Hilton..... | 810 | 2003-07 |
| 10. Niketa Harris..... | 785 | 1998-02 |

ASSISTS

| | | |
|---------------------------------|-----|---------|
| 1. Charlene Taylor..... | 603 | 1985-89 |
| 2. Moe Stevens..... | 539 | 1992-96 |
| 3. Helin Marte..... | 503 | 2006-10 |
| 4. Kristy Conyers..... | 482 | 1996-00 |
| 5. Cathy Alston..... | 451 | 1980-84 |
| 6. Carolyn Bell..... | 372 | 1983-87 |
| 7. Briana Rende..... | 368 | 2005-09 |
| 8. Nikki (Tierney) Devaney..... | 360 | 1990-94 |
| 9. Debbie Moore..... | 314 | 1989-93 |
| 10. Anh-Dao Tran..... | 303 | 2010-13 |

BLOCKED SHOTS

| | | |
|------------------------|-----|---------|
| 1. Joy Jeter..... | 246 | 1985-89 |
| 2. Micah Wormack..... | 136 | 2016-20 |
| 3. Aquillin Hayes..... | 134 | 2011-15 |
| 4. Katia Oge..... | 101 | 2015-19 |
| 5. Mary Doherty..... | 92 | 1981-85 |
| 6. Sonja Beamon..... | 91 | 1983-87 |
| 7. Arrette Harvey..... | 85 | 1989-91 |
| 8. Rykema Stone..... | 83 | 2011-15 |
| 9. Arlevia Samuel..... | 73 | 1991-95 |
| 10. Ashley Hilton..... | 72 | 2003-07 |

STEALS

| | | |
|---------------------------------|-----|---------|
| 1. Charlene Taylor..... | 419 | 1985-89 |
| 2. Debbie Moore..... | 379 | 1989-93 |
| 3. Kristy Conyers..... | 316 | 1996-00 |
| 4. Moe Stevens..... | 298 | 1992-96 |
| 5. Carolyn Bell..... | 281 | 1983-87 |
| 6. Nikki (Tierney) Devaney..... | 278 | 1990-94 |
| 7. Cathy Alston..... | 251 | 1980-84 |
| 8. Helin Marte..... | 238 | 2006-10 |
| 9. Jennifer Davis..... | 237 | 1992-96 |
| 10. Joy Jeter..... | 221 | 1985-89 |

GAMES PLAYED

| | | |
|-----------------------|-----|---------|
| 1. Joy Jeter..... | 122 | 1985-89 |
| Charlene Taylor..... | 122 | 1985-89 |
| 3. Ashley Hilton..... | 119 | 2003-07 |
| 4. Sonja Beamon..... | 117 | 1983-87 |
| Adelina Gentry..... | 117 | 2002-06 |
| Lauren Hood..... | 117 | 2005-09 |
| 7. Briana Rende..... | 116 | 2005-09 |
| 8. Alanna Zahora..... | 115 | 2003-07 |
| Lauren Hebert..... | 115 | 2012-16 |
| 10. Helin Marte..... | 114 | 2006-10 |
| Carolyn Bell..... | 114 | 1983-87 |

THE LAST TIME

THE LAST TIME A NEW HAVEN STUDENT-ATHLETE...

| | |
|--|---|
| Scored 20-29 points | Cam DeBose (24) vs. Stonehill, 1/15/22 |
| Scored 30-39 points | Micah Wormack (30) at Pace, 02/13/19 |
| Made 10+ field goals | Aurora Deshaies (11) vs. Georgian Court, 11/14/21 |
| Made 10+ free throws | Alexandria Kerr (11-11) vs. Assumption, 01/12/19 |
| Made 5+ three-pointers | Brie Pergola (6) at College of Staten Island, 11/17/21 |
| Had 10-14 rebounds | Alyssa Stevenson (12) vs. Stonehill, 1/15/22 |
| Had 15-19 rebounds | Aurora Deshaies (16) vs. Georgian Court, 11/14/21 |
| Had 20 rebounds | Aquillin Hayes (20) at Rollins, 11/30/13 |
| Had 10 assists | Luzdali Ocasio (10) at Chestnut Hill, 12/11/19 |
| Had 5+ blocks | Micah Wormack (5) vs. Le Moyne, 11/23/19 |
| Had 5+ steals | Camryn DeBose (6) at Assumption, 01/25/20 |
| Had a double-double | Aurora Deshaies (14 points, 11 rebounds), vs. Chestnut Hill, 12/19/21 |
| Had consecutive double-doubles | Aurora Deshaies (2), at Bloomfield and against Chestnut Hill, 12/19/21 |
| Led team in points, rebounds and assists | Alexandria Kerr (29 points, 15 rebounds, 4 assists) vs. Assumption, 01/12/19 |
| Scored in the final 10 seconds to win | Aurora Deshaies (2-point buzzer beater to win 76-74) vs. Georgian Court, 11/14/21 |

THE LAST TIME A NEW HAVEN TEAM...

| | |
|---|--|
| Scored 70-79 points | at College of Staten Island (W, 72-64), 11/17/21 |
| Scored 80-89 points | vs. East Stroudsburg (W, 88-85 (OT), 11/10/17 |
| Scored 90-99 points | vs. Post, (W, 91-60), 12/31/17 |
| Scored 100 points | vs. Mercy (W, 103-81), 12/01/07 |
| Allowed 50 points or fewer | vs. Saint Thomas Aquinas (W, 56-43), 11/28/21 |
| Allowed 40 points or fewer | vs. Bloomfield (W, 63-37), 11/13/21 |
| Won by 20-29 points | vs. Bloomfield (26 points), 11/13/21 |
| Won by 30-39 points | vs. Nyack (30 points), 12/29/18 |
| Won by 40 points | vs. Le Moyne (95-52), 02/16/13 |
| Had 50 rebounds | at College of Staten Island (51), 11/17/21 |
| Shot 50 percent or better from the field | at Saint Michael's (50.0%), 01/11/20 |
| Shot 50 percent or better from three-point range (min. 10 attempts) | vs. Stonehill (50.0%), 01/15/22 |
| Shot 90 percent or better from the free throw line (min. 10 attempts) | vs. Saint Rose (90.9 percent, 20-22), 12/07/19 |
| Made more three-point than two-point field goals | vs. No. 10 Holy Family (13 three-pointers, 12 two-pointers), 11/15/08 |
| Had 20 assists | at Chestnut Hill (22), 12/11/19 |
| Had 20 steals | vs. Mercy (20), 12/01/07 |
| Had 4 players in double figures | vs. Georgian Court (Deshaies 23, DeBose 22, Pergola 13, Chambers 11), 11/14/21 |
| Had 5 players in double figures | vs. Bloomfield (Deshaies 12, DeBose 12, Wormack 10, White 10, Ocasio 10), 11/20/19 |
| Had all 5 starters in double figures | vs. UPR-Bayamon (Kerr 19, Pergola 16, Wormack 13, Cubbage 11, DeBose 10), 11/21/18 |
| Had 2 players with 10+ rebounds | vs. Bloomfield (Van Cleef 13, Deshaies 12), 12/17/21 |
| Had 2 players record a double-double | at Chestnut Hill (Wormack 15 pts/10 reb; Deshaies 15 pts/10 reb), 12/11/19 |
| Won in overtime | 72-64 at College of Staten Island, 11/17/21 |
| Lost in overtime | 69-63 at Franklin Pierce, 01/30/19 |
| Scored 80 points or more and lost | vs. Adelphi (92-86), 03/14/14 |
| Allowed 50 points or fewer and lost | at Le Moyne (42-28), 03/07/19 |
| Played a nationally-ranked opponent | vs. No. 10 Adelphi, 02/22/20 |
| Defeated a nationally-ranked opponent | vs. No. 19 Bentley (53-40), 01/14/20 |

BOLD DENOTES 2021-22 OCCURENCE



DEBBIE BUFF

HEAD COACH
SECOND SEASON
CORTLAND

Debbie Buff enter her third season at the helm of the Blue and Gold in 2021-22, coming to New Haven prior to the 2018-19 campaign following a seven-year stint at Wheeling Jesuit University (Wheeling, W.V.) which included back-to-back Mountain East Conference Championships and NCAA Division II tournament appearances.

In her first two seasons, Buff (36-21) has led the Chargers to back-to-back 18 win campaigns and an appearance in the Northeast-10 Conference tournament in each of her first two seasons. During her second season in 2019-20, Buff led the Chargers to an 18-9 record. New Haven finished the season ninth in the nation in Division II in scoring defense, holding opponents to just 53.7 points per game. NE10 All-Rookie selection Aurora Deshaies led the conference in field goal pct. (.565), senior Micah Wormack earned Second Team All-NE10 honors, and Camryn DeBose was named to the Northeast-10 All-Academic Team.

In her first campaign with the Chargers in 2018-19, Buff led New Haven to an 18-12 record, an improvement of six wins over the season prior to her arrival. The season culminated with a trip to the NE10 semifinals for the first time since 2016 following a road victory over Stonehill in the NE10 quarterfinals. Buff also helped mentor Alexandria Kerr, a First Team All-NE10 honoree and three-time CoSIDA First Team Academic All-District selection.

Prior to New Haven, Buff took over the Wheeling Jesuit program in 2011 and in five years led her first full recruiting class to the first of back-to-back Mountain East Conference Championships in 2015-16. The Cardinals finished that season with a 27-6 overall record, which tied the school record for most victories in a single season.

The Cardinals followed that up with a second-straight 25-win season, Mountain East Championship and subsequent trip to the NCAA Division II regional championship. Over her seven years in West Virginia, Buff collected a 111-93 overall record for a .544 winning percentage. Over her seven years, the Cardinals finished with a plus-.500 record on four occasions.

Prior to Wheeling Jesuit, Buff spent two seasons at Endicott College where she led the Gulls to the most wins in school history with a 23-6 record in 2008-09 and an appearance

in the championship game of the Commonwealth Coast Conference. In her two seasons at Endicott, she compiled an overall record of 42-14.

Her first stint as a head coach came at the Rochester Institute of Technology where her five-plus year career was highlighted by Empire 8 Coach of the Year accolades in 2006-07 when she led the Tigers to the most victories in the history of the RIT women's basketball program and the program's first ever appearance in the Empire 8 and ECAC Championships.

Prior to her collegiate head coaching career, Buff served as an assistant coach and recruiting coordinator at fellow Northeast-10 opponent College of Saint Rose where she helped lead the Golden Knights to the 2000 NCAA Division II Northeast Region Championship, a 34-1 record and a national ranking as high as No. 1 in the country.

Previous to joining a college program, Buff spent 14 years as the head coach at Bishop Maginn High School in Albany. In her time there, she recorded 203 wins and 57 losses while capturing five Big 10 Conference Championships, a Section II title, a regional title and a New York State Class A title. A Hall of Famer at Bishop Maginn, Buff was named the New York State Coach of the Year following the team's 1996 state title run.

A graduate from the State University of New York College at Cortland with a Bachelor of Science degree in physical education, she also holds a Master's Degree in health education from Russell Sage College. During her time at Cortland, she competed three years for the women's basketball team before turning her attention to training for the Skylon International Marathon in New York. In addition to Skylon, Buff has competed in seven triathlons, most notably the Lake Placid Olympic Tour triathlon.

Outside of her coaching and triathlon experiences, Buff has donated countless hours of volunteer time with the Alzheimer's Association and the Make A Wish foundation, both causes near and dear to her heart.

BUFF ALL-TIME VS. OPPONENTS

| | |
|--------------------------------|-----|
| Adelphi..... | 0-5 |
| American International | 4-1 |
| Assumption | 1-1 |
| Bentley | 1-1 |
| Bloomfield..... | 3-0 |
| Bloomsburg..... | 0-0 |
| Bridgeport..... | 2-0 |
| Chestnut Hill..... | 1-1 |
| Central Oklahoma | 0-1 |
| College of Staten Island | 2-0 |
| Dominican..... | 2-0 |
| Franklin Pierce | 1-1 |
| Georgian Court | 1-0 |
| Goldey-Beacom..... | 2-0 |

| | |
|-----------------------------|----------------------------|
| Le Moyne..... | 3-5 Overall, 2-4 New Haven |
| Merrimack | 0-1 |
| Nyack | 1-0 |
| Pace | 2-3 |
| Post | 1-0 |
| Puerto Rico - Bayamon | 1-0 |
| Saint Anselm | 1-2 |
| Saint Michael's..... | 2-0 |
| Saint Rose..... | 3-2 |
| Saint Thomas Aquinas | 1-1 |
| So. Connecticut State..... | 4-1 |
| So. New Hampshire | 1-1 |
| Stonehill..... | 1-3 |
| Upper Iowa | 1-0 |

THE BUFF FILE

University of New Haven
Head Coach (2018-Present)

Wheeling Jesuit University
Head Coach (2011-2018)

Endicott College
Head Coach (2008-10)

Rochester Institute of Technology
Head Coach (2002-08)

College of Saint Rose
Assistant Coach

Bishop Maginn High School
Head Coach

BUFF YEAR-BY-YEAR
HEAD COACHING RECORDS

| | |
|-----------------------------|-----------------------------|
| 2002-03 (RIT)..... | 7-18 Overall, 3-11 Empire 8 |
| 2003-04 (RIT)..... | 10-15 Overall, 5-9 Empire 8 |
| 2004-05 (RIT)..... | 8-17 Overall, 4-18 Empire 8 |
| 2005-06 (RIT)..... | 6-18 Overall, 3-11 Empire 8 |
| 2006-07 (RIT)..... | 15-12 Overall, 8-6 Empire 8 |
| 2007-08 (RIT)..... | 5-3 Overall, 2-2 Empire 8 |
| 2008-09 (EC)..... | 23-6 Overall, 12-1 CCC |
| 2009-10 (EC)..... | 19-8 Overall, 11-2 CCC |
| 2011-12 (WJU)..... | 5-22 Overall, 2-20 WVIAC |
| 2012-13 (WJU)..... | 8-19 Overall, 5-17 WVIAC |
| 2013-14 (WJU)..... | 15-13 Overall, 11-10 MEC |
| 2014-15 (WJU)..... | 19-9 Overall, 15-7 MEC |
| 2015-16 (WJU)..... | 27-6 Overall, 18-4 MEC |
| 2016-17 (WJU)..... | 25-7 Overall, 15-5 MEC |
| 2017-18 (WJU)..... | 12-17, 10-12 MEC |
| 2018-19 (UNH)..... | 18-11 Overall, 10-10 NE10 |
| 2019-20 (UNH)..... | 18-9 Overall, 12-7 NE10 |
| 2021-22 (UNH)..... | 5-8 Overall, 0-7 NE10 |
| Overall Record | 245-219 (.528) |
| NE10 Record | 22-24 (.478) |



PLAYER CAREER/SEASON STATS



GABRIELLE STICKLE

1

GUARD

SOPHOMORE | 5-6

SYRACUSE, N.Y. | JAMESVILLE-DEWITT

2021-22 SEASON HIGHS

Points: 7, vs. Adelphi, 1/17/22
 Rebounds: 2, vs. Adelphi, 1/17/22
 Assists: 2, at Bloomfield, 12/17/21
 Steals: 2, 2x last vs. Adelphi, 1/17/22
 Blocks: N/A
 FG made: 2, vs. Adelphi, 1/17/22
 3FG made: 2, vs. Adelphi, 1/17/22
 FT made: 2, vs. Georgian Court - 11/14/21
 Double-Doubles: N/A

SINGLE-GAME CAREER HIGHS

Points: 7, vs. Adelphi, 1/17/22
 Rebounds: 2, vs. Adelphi, 1/17/22
 Assists: 2, at Bloomfield, 12/17/21
 Steals: 2, 2x last vs. Adelphi, 1/17/22
 Blocks: N/A
 FG made: 2, vs. Adelphi, 1/17/22
 3FG made: 2, vs. Adelphi, 1/17/22
 FT made: 2, vs. Georgian Court - 11/14/21
 Double-Doubles: N/A

CAREER STATISTICS

| | | | | Field Goals | | 3-Point | | F-Throws | | Rebounds | | | | | | | | | | Scoring | |
|---------|------|-------|----------|-------------|------|----------|------|----------|------|----------|-----|-----|-----|-------|---|----|-----|-----|-----|---------|--|
| SEASON | TEAM | GP-GS | MIN/AVG | FG-FGA | FG% | 3FG-3FGA | 3FG% | FT-FTA | FT% | OFF | DEF | TOT | AVG | PF-FO | A | TO | BLK | STL | PTS | AVG | |
| 2019-20 | UNH | 9-0 | 25/2.8 | 1-4 | .250 | 0-0 | .000 | 0-0 | .000 | 0 | 5 | 5 | 0.6 | 1-0 | 3 | 4 | 0 | 2 | 2 | 0.2 | |
| 2021-22 | UNH | 8-2 | 104/13.0 | 9-24 | .375 | 0-0 | .000 | 10-16 | .625 | 15 | 22 | 37 | 4.6 | 13-0 | 4 | 11 | 2 | 4 | 28 | 3.5 | |



BRIANNA DIAZ

2

GUARD

JUNIOR | 5-6

BRONX, N.Y. | CARDINAL SPELLMAN

2021-22 SEASON HIGHS

Points: 3, vs. Pace, 11/23/21
 Rebounds: N/A
 Assists: 1, vs. Pace, 11/23/21
 Steals: N/A
 Blocks: N/A
 FG made: 1, vs. Pace, 11/23/21
 3FG made: 1, vs. Pace, 11/23/21
 FT made: N/A
 Double-Doubles: N/A

SINGLE-GAME CAREER HIGHS

Points: 3, 2x- last vs. Pace, 11/23/21
 Rebounds: 1, 2x- last at Saint Michael's - 01/11/20
 Assists: 1, vs. Pace, 11/23/21
 Steals: N/A
 Blocks: N/A
 FG made: 1, 2x- last vs. Pace, 11/23/21
 3FG made: 1, 2x- last vs. Pace, 11/23/21
 FT made: N/A
 Double-Doubles: N/A

CAREER STATISTICS

| | | | | Field Goals | | 3-Point | | F-Throws | | Rebounds | | | | | | | | | | Scoring | |
|---------|------|-------|---------|-------------|-------|----------|-------|----------|------|----------|-----|-----|-----|-------|---|----|-----|-----|-----|---------|--|
| SEASON | TEAM | GP-GS | MIN/AVG | FG-FGA | FG% | 3FG-3FGA | 3FG% | FT-FTA | FT% | OFF | DEF | TOT | AVG | PF-FO | A | TO | BLK | STL | PTS | AVG | |
| 2019-20 | UNH | 4-0 | 4/1.0 | 1-2 | .500 | 1-2 | .500 | 0-0 | .000 | 0 | 2 | 2 | 0.5 | 1-0 | 0 | 0 | 0 | 0 | 3 | 0.8 | |
| 2021-22 | UNH | 1-0 | 2/2.0 | 1-1 | 1.000 | 1-1 | 1.000 | 0-0 | .000 | 0 | 0 | 0 | 0.0 | 0-0 | 1 | 0 | 0 | 0 | 3 | 3.0 | |
| TOTAL | | 5-0 | 6/1.2 | 2-3 | .667 | 2-3 | .667 | 0-0 | .000 | 0 | 2 | 2 | 0.4 | 1-0 | 1 | 0 | 0 | 0 | 6 | 1.2 | |

PLAYER CAREER/SEASON STATS



ALIYAH WRIGHT

3

GUARD

FRESHMAN | 5-4

ALBANY, N.Y. | COLONIE CENTRAL

2021-22 SEASON HIGHS

Points: N/A
Rebounds: N/A
Assists: N/A
Steals: N/A
Blocks: N/A
FG made: N/A
3FG made: N/A
FT made: N/A
Double-Doubles: N/A

SINGLE-GAME CAREER HIGHS

Points: 3, at Le Moyne - 02/08/20
Rebounds: 2, 2x - last at Le Moyne - 02/08/20
Assists: 4, vs. Staten Island - 11/09/19
Steals: 1, 3x - last at Stonehill - 01/18/20
Blocks: N/A
FG made: 1, 3x - last at Saint Michael's - 01/11/20
3FG made: N/A
FT made: 3, at Le Moyne - 02/08/20
Double-Doubles: N/A

CAREER STATISTICS

| SEASON | TEAM | GP-GS | MIN/AVG | Field Goals | | 3-Point | | F-Throws | | Rebounds | | | | | | | | | | Scoring | |
|---------|------|-------|----------|-------------|------|----------|------|----------|------|----------|-----|-----|-----|-------|----|----|-----|-----|--|---------|-----|
| | | | | FG-FGA | FG% | 3FG-3FGA | 3FG% | FT-FTA | FT% | OFF | DEF | TOT | AVG | PF-FO | A | TO | BLK | STL | | PTS | AVG |
| 2019-20 | NYIT | 10-0 | 64/6.4 | 5-18 | .278 | 3-6 | .500 | 0-0 | .000 | 7 | 6 | 13 | 1.3 | 13-1 | 3 | 5 | 1 | 0 | | 13 | 1.3 |
| 2021-22 | UNH | 13-11 | 353/27.1 | 28-89 | .315 | 6-28 | .214 | 7-16 | .438 | 25 | 63 | 88 | 6.8 | 49-5 | 13 | 38 | 7 | 12 | | 69 | 5.3 |



LYRIK JACKSON

4

GUARD

SENIOR | 5-8

SYRACUSE, N.Y. | SYRACUSE ACADEMY OF SCIENCE/ MOHAWK VALLEY

2021-22 SEASON HIGHS

Points: 3, at Southern Conn. St., 12/1/21
Rebounds: 1, 2x - last at Bloomfield - 12/17/21
Assists: N/A
Steals: 1, at Southern Conn. St., - 12/1/21
Blocks: N/A
FG made: 1, at Bloomfield, 12/17/21
3FG made: N/A
FT made: 2, 2x - Last vs. American Int'l - 12/7/21
Double-Doubles: N/A

SINGLE-GAME CAREER HIGHS

Points: 3, at Southern Conn. St., 12/1/21
Rebounds: 1, 2x - last at Bloomfield - 12/17/21
Assists: N/A
Steals: 1, at Southern Conn. St., - 12/1/21
Blocks: N/A
FG made: 1, at Bloomfield, 12/17/21
3FG made: N/A
FT made: 2, 2x - Last vs. American Int'l - 12/7/21
Double-Doubles: N/A

CAREER STATISTICS

| SEASON | TEAM | GP-GS | MIN/AVG | Field Goals | | 3-Point | | F-Throws | | Rebounds | | | | | | | | | | Scoring | |
|---------|------|-------|---------|-------------|------|----------|------|----------|------|----------|-----|-----|-----|-------|---|----|-----|-----|--|---------|-----|
| | | | | FG-FGA | FG% | 3FG-3FGA | 3FG% | FT-FTA | FT% | OFF | DEF | TOT | AVG | PF-FO | A | TO | BLK | STL | | PTS | AVG |
| 2021-22 | UNH | 2-0 | 10/5.2 | 0-0 | .000 | 0-0 | .000 | 0-2 | .000 | 0 | 0 | 0 | 0.0 | 0-0 | 1 | 1 | 0 | 0 | | 0 | 0.0 |
| TOTAL | | 2-0 | 10/5.2 | 0-0 | .000 | 0-0 | .000 | 0-2 | .000 | 0 | 0 | 0 | 0.0 | 0-0 | 1 | 1 | 0 | 0 | | 0 | 0.0 |

PLAYER CAREER/SEASON STATS



CHARLOTTE BASSETT

5

GUARD

FRESHMAN | 5-6

GLASTONBURY, CONN. | GLASTONBURY

2021-22 SEASON HIGHS

Points: 2, vs. Adelphi, 1/17/22
Rebounds: 3, vs. Stonehill, 1/15/22
Assists: 3, vs. Adelphi, 1/17/22
Steals: N/A
Blocks: 1, vs. Adelphi, 1/17/22
FG made: 1, vs. Adelphi, 1/17/22
3FG made: N/A
FT made: N/A
Double-Doubles: N/A

SINGLE-GAME CAREER HIGHS

Points: 2, vs. Adelphi, 1/17/22
Rebounds: 3, vs. Stonehill, 1/15/22
Assists: 3, vs. Adelphi, 1/17/22
Steals: N/A
Blocks: 1, vs. Adelphi, 1/17/22
FG made: 1, vs. Adelphi, 1/17/22
3FG made: N/A
FT made: N/A
Double-Doubles: N/A

CAREER STATISTICS

| SEASON | TEAM | GP-GS | MIN/AVG | Field Goals | | 3-Point | | F-Throws | | Rebounds | | | | Scoring | | | | | | |
|---------|------|-------|---------|-------------|------|----------|------|----------|------|----------|-----|-----|-----|---------|---|----|-----|-----|-----|-----|
| | | | | FG-FGA | FG% | 3FG-3FGA | 3FG% | FT-FTA | FT% | OFF | DEF | TOT | AVG | Pf-FO | A | TO | BLK | STL | PTS | AVG |
| 2021-22 | UNH | 4-0 | 26/6.5 | 1-7 | .143 | 0-3 | .000 | 0-0 | .000 | 1 | 5 | 6 | 1.5 | 5-0 | 3 | 4 | 1 | 0 | 2 | 0.5 |
| TOTAL | | 4-0 | 26/6.5 | 1-7 | .143 | 0-3 | .000 | 0-0 | .000 | 1 | 5 | 6 | 1.5 | 5-0 | 3 | 4 | 1 | 0 | 2 | 0.5 |



AZURE RILEY

10

FORWARD

SOPHOMORE | 5-9

WINDSOR, CONN. | WINDSOR

2021-22 SEASON HIGHS

Points: 2, 2x - last at Le Moyne, 11/20/21
Rebounds: 6, at College of Staten Island, 11/17/21
Assists: N/A
Steals: N/A
Blocks: N/A
FG made: 1, 2x - last at Le Moyne, 11/20/21
3FG made: N/A
FT made: N/A
Double-Doubles: N/A

SINGLE-GAME CAREER HIGHS

Points: 2, 2x - last at Le Moyne, 11/20/21
Rebounds: 6, at College of Staten Island, 11/17/21
Assists: N/A
Steals: N/A
Blocks: N/A
FG made: 1, 2x - last at Le Moyne, 11/20/21
3FG made: N/A
FT made: N/A
Double-Doubles: N/A

CAREER STATISTICS

| SEASON | TEAM | GP-GS | MIN/AVG | Field Goals | | 3-Point | | F-Throws | | Rebounds | | | | Scoring | | | | | | |
|---------|------|-------|----------|-------------|------|----------|------|----------|------|----------|-----|-----|-----|---------|----|----|-----|-----|-----|------|
| | | | | FG-FGA | FG% | 3FG-3FGA | 3FG% | FT-FTA | FT% | OFF | DEF | TOT | AVG | Pf-FO | A | TO | BLK | STL | PTS | AVG |
| 2017-18 | UNH | 26-21 | 832/32.0 | 102-278 | .367 | 15-54 | .278 | 55-68 | .809 | 39 | 49 | 88 | 3.4 | 51-0 | 58 | 60 | 5 | 27 | 274 | 10.5 |
| 2018-19 | UNH | 30-30 | 988/32.9 | 80-218 | .367 | 21-75 | .280 | 54-70 | .771 | 16 | 55 | 71 | 2.4 | 47-0 | 79 | 82 | 9 | 28 | 235 | 7.8 |
| 2019-20 | UNH | 27-27 | 873/32.3 | 79-232 | .341 | 23-86 | .267 | 58-66 | .879 | 41 | 96 | 137 | 5.1 | 51-0 | 96 | 89 | 7 | 34 | 249 | 9.2 |

PLAYER CAREER/SEASON STATS



CAMRYN DEBOISE

11

GUARD

SENIOR | 5-10

WELLINGTON, FLA. | WELLINGTON COMMUNITY

2021-22 SEASON HIGHS

Points: 24, vs. Stonehill, 1/15/22
 Rebounds: 8, at Saint Rose - 12/4/21
 Assists: 4, at Bloomfield, 12/17/21
 Steals: 4, vs. American Int'l - 12/7/21
 Blocks: 2, 2x - last vs. Adelphi, 1/15/22
 FG made: 9, vs. Stonehill, 1/15/22
 3FG made: 4, vs. American Int'l - 12/7/21
 FT made: 7, vs. Georgian Court - 11/14/21
 Double-Doubles: N/A

SINGLE-GAME CAREER HIGHS

Points: 24, vs. Stonehill, 1/15/22
 Rebounds: 11, 2x- last vs So. Conn. St. - 12/04/19
 Assists: 4, at Bloomfield, 12/17/21
 Steals: 6, at Assumption - 01/25/20
 Blocks: 2, 2x - last vs. Adelphi, 1/15/22
 FG made: 9, vs. Stonehill, 1/15/22
 3FG made: 5, 3x- last at SNHU - 01/28/20
 FT made: 7, 2x - last vs. Georgian Court - 11/14/21
 Double-Doubles: N/A

CAREER STATISTICS

| SEASON | TEAM | GP-GS | MIN/AVG | FG-FGA | FG% | 3FG-3FGA | 3FG% | FT-FTA | FT% | OFF | DEF | TOT | AVG | PF-FO | A | TO | BLK | STL | PTS | AVG |
|---------|------|-------|----------|--------|------|----------|------|--------|------|-----|-----|-----|-----|-------|---|----|-----|-----|-----|-----|
| 2019-20 | UNH | 15-0 | 69/4.6 | 4-13 | .308 | 1-5 | .200 | 0-0 | .000 | 1 | 6 | 7 | 0.5 | 10-0 | 3 | 4 | 0 | 1 | 9 | 0.6 |
| 2021-22 | UNH | 11-3 | 151/13.7 | 15-36 | .417 | 3-11 | .273 | 10-14 | .714 | 7 | 10 | 17 | 1.5 | 5-0 | 5 | 15 | 0 | 8 | 43 | 3.9 |
| TOTAL | | 26-3 | 219/8.4 | 19-49 | .388 | 4-16 | .250 | 10-14 | .714 | 8 | 16 | 24 | 0.9 | 15-0 | 8 | 19 | 0 | 9 | 52 | 2.0 |



PLAYER CAREER/SEASON STATS



BRIANA VAN CLEAF

12

GUARD

JUNIOR | 5-9

STATEN ISLAND, N.Y. | NOTRE DAME ACADEMY/ NYIT

2021-22 SEASON HIGHS

Points: 19, vs. Chestnut Hill, 12/19/21
 Rebounds: 11, vs. St. Thomas Aquinas - 11/28/21
 Assists: 2, 2x - last vs Adelphi, 1/17/22
 Steals: 2, vs Adelphi, 1/17/22
 FG made: 7 vs. Chestnut Hill, 12/19/21
 3FG made: 4, vs. Chestnut Hill, 12/19/21
 Blocks: 2, vs. Stonehill, 1/15/22
 FT made: 5, vs. St. Thomas Aquinas - 11/28/21
 Double-Doubles: N/A

SINGLE-GAME CAREER HIGHS

Points: 19, vs. Chestnut Hill, 12/19/21
 Rebounds: 11, vs. St. Thomas Aquinas - 11/28/21
 Assists: 2, 2x - last vs Adelphi, 1/17/22
 Steals: 2, vs Adelphi, 1/17/22
 FG made: 7 vs. Chestnut Hill, 12/19/21
 3FG made: 4, vs. Chestnut Hill, 12/19/21
 Blocks: 2, vs. Stonehill, 1/15/22
 FT made: 5, vs. St. Thomas Aquinas - 11/28/21
 Double-Doubles: N/A

CAREER STATISTICS

| | | | | Field Goals | | 3-Point | | F-Throws | | Rebounds | | | | | | | | | | Scoring | |
|---------|------|-------|---------|-------------|------|----------|------|----------|------|----------|-----|-----|-----|-------|---|----|-----|-----|-----|---------|--|
| SEASON | TEAM | GP-GS | MIN/AVG | FG-FGA | FG% | 3FG-3FGA | 3FG% | FT-FTA | FT% | OFF | DEF | TOT | AVG | PF-FO | A | TO | BLK | STL | PTS | AVG | |
| 2021-22 | UNH | 10-0 | 88/8.8 | 3-22 | .136 | 3-12 | .250 | 3-4 | .750 | 1 | 3 | 4 | 0.4 | 9-0 | 5 | 4 | 0 | 6 | 12 | 1.2 | |
| TOTAL | | 10-0 | 88/8.8 | 3-22 | .136 | 3-12 | .250 | 3-4 | .750 | 1 | 3 | 4 | 0.4 | 9-0 | 5 | 4 | 0 | 6 | 12 | 1.2 | |



KAMRYN HAMMOND

13

GUARD

SENIOR | 5-9

POUGHKEEPSIE, N.Y. | F.D. ROOSEVELT / DUTCHESS CC

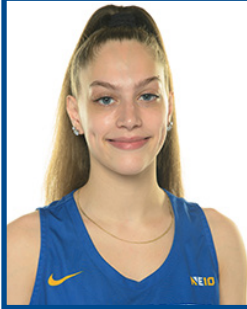
2021-22 SEASON HIGHS

Points: N/A
 Rebounds: N/A
 Assists: 1, vs. Stonehill, 1/15/22
 Steals: N/A
 Blocks: N/A
 FG made: N/A
 3FG made: N/A
 FT made: N/A
 Double-Doubles: N/A

SINGLE-GAME CAREER HIGHS

Points: N/A
 Rebounds: N/A
 Assists: 1, vs. Stonehill, 1/15/22
 Steals: N/A
 Blocks: N/A
 FG made: N/A
 3FG made: N/A
 FT made: N/A
 Double-Doubles: N/A

PLAYER CAREER/SEASON STATS



MARIGONA BACALIU

15

GUARD

JUNIOR | 5-8

WORCESTER, MASS. | PUTNAM SCIENCE ACADEMY / CONCORDIA (NY)

2021-22 SEASON HIGHS

Points: 8, vs. Stonehill, 1/15/22
Rebounds: 4, vs. Adelphi, 1/17/22
Assists: 3, vs. Adelphi, 1/17/22
Steals: 2, vs. Bloomfield - 11/13/21
Blocks: N/A
FG made: 3, vs. Stonehill, 1/15/22
3FG made: 2, vs. Stonehill, 1/15/22
FT made: 2, vs. Adelphi, 1/17/22
Double-Doubles: N/A

SINGLE-GAME CAREER HIGHS

Points: 8, vs. Stonehill, 1/15/22
Rebounds: 4, vs. Adelphi, 1/17/22
Assists: 3, vs. Adelphi, 1/17/22
Steals: 2, vs. Bloomfield - 11/13/21
Blocks: N/A
FG made: 3, vs. Stonehill, 1/15/22
3FG made: 2, vs. Stonehill, 1/15/22
FT made: 2, vs. Adelphi, 1/17/22
Double-Doubles: N/A

CAREER STATISTICS

| SEASON | TEAM | GP-GS | MIN/AVG | Field Goals | | 3-Point | | F-Throws | | Rebounds | | | | | | | | | Scoring | |
|---------------|------|-------|----------|-------------|------|----------|------|----------|------|----------|-----|-----|-----|-------|----|-----|-----|-----|---------|------|
| | | | | FG-FGA | FG% | 3FG-3FGA | 3FG% | FT-FTA | FT% | OFF | DEF | TOT | AVG | PF-FO | A | TO | BLK | STL | PTS | AVG |
| 2019-20 | CUNY | 26-2 | 477/18.3 | 39-131 | .298 | 16-70 | .229 | 24-42 | .571 | 12 | 67 | 79 | 3.0 | 62-1 | 32 | 62 | 9 | 30 | 118 | 4.5 |
| 2020-21 | CUNY | 10-10 | 313/31.3 | 53-140 | .379 | 16-66 | .242 | 30-50 | .600 | 5 | 28 | 33 | 3.3 | 28-1 | 17 | 38 | 7 | 34 | 152 | 15.2 |
| 2021-22 | UNH | 10-2 | 136/13.6 | 8-28 | .286 | 5-17 | .294 | 2-4 | .500 | 6 | 8 | 14 | 1.4 | 21-0 | 5 | 13 | 0 | 6 | 23 | 2.3 |
| TOTAL FOR UNH | | 10-2 | 136/13.6 | 8-28 | .286 | 5-17 | .294 | 2-4 | .500 | 6 | 8 | 14 | 1.4 | 21-0 | 5 | 13 | 0 | 6 | 23 | 2.3 |
| TOTAL | | 46-14 | 926/20.1 | 100-299 | .334 | 37-153 | .242 | 56-96 | .583 | 23 | 103 | 126 | 2.7 | 111-2 | 54 | 113 | 16 | 70 | 293 | 6.4 |



PLAYER CAREER/SEASON STATS



KAMERYN KING

21

GUARD

FRESHMAN | 5-8

OLD SAYBROOK, CONN. | MERCY

2021-22 SEASON HIGHS

Points: 11, 2x - last vs. Stonehill, 1/15/22
 Rebounds: 5, at Southern Conn. St., - 12/1/21
 Assists: 1, 5x - last vs. Stonehill, 1/15/22
 Steals: 3, vs. Stonehill, 1/15/22
 Blocks: N/A
 FG made: 4, 2x - last vs. Stonehill, - 1/15/21
 3FG made: 2, vs. Stonehill, 1/15/22
 FT made: 4, vs. Adelphi, 1/17/22
 Double-Doubles: N/A

SINGLE-GAME CAREER HIGHS

Points: 11, 2x - last vs. Stonehill, 1/15/22
 Rebounds: 5, at Southern Conn. St., - 12/1/21
 Assists: 1, 5x - last vs. Stonehill, 1/15/22
 Steals: 3, vs. Stonehill, 1/15/22
 Blocks: N/A
 FG made: 4, 2x - last vs. Stonehill, - 1/15/21
 3FG made: 2, vs. Stonehill, 1/15/22
 FT made: 4, vs. Adelphi, 1/17/22
 Double-Doubles: N/A

CAREER STATISTICS

| | | | | Field Goals | | 3-Point | | F-Throws | | Rebounds | | | | | | | | | Scoring | |
|---------|------|-------|---------|-------------|------|----------|------|----------|-------|----------|-----|-----|-----|-------|---|----|-----|-----|---------|-----|
| SEASON | TEAM | GP-GS | MIN/AVG | FG-FGA | FG% | 3FG-3FGA | 3FG% | FT-FTA | FT% | OFF | DEF | TOT | AVG | PF-FO | A | TO | BLK | STL | PTS | AVG |
| 2021-22 | UNH | 7-0 | 26/3.7 | 2-7 | .286 | 0-3 | .000 | 5-5 | 1.000 | 0 | 2 | 2 | 0.3 | 1-0 | 0 | 1 | 0 | 1 | 9 | 1.3 |
| TOTAL | | 7-0 | 26/3.7 | 2-7 | .286 | 0-3 | .000 | 5-5 | 1.000 | 0 | 2 | 2 | 0.3 | 1-0 | 0 | 1 | 0 | 1 | 9 | 1.3 |



PLAYER CAREER/SEASON STATS



BIONCA CHAMBERS

22

GUARD

GRADUATE STUDENT | 5-7

BRONX, N.Y. | NEW MILFORD / FELICIAN

2019-20 SEASON HIGHS

Points: 11, 2x - last at Saint Rose - 12/4/21
Rebounds: 7, at College of Staten Island, 11/17/21
Assists: 3, at Southern Conn. St., - 12/1/21
Steals: 3, 2x - Last vs. American Int'l - 12/7/21
Blocks: 3, at College of Staten Island, 11/17/21
FG made: 5, at Saint Rose - 12/4/21
3FG made: 1, at Saint Rose - 12/4/21
FT made: 5, vs. Georgian Court - 11/14/21
Double-Doubles: N/A

SINGLE-GAME CAREER HIGHS

Points: 34, at Post - 01/22/19*
Rebounds: 11, at Holy Family - 01/13/19*
Assists: 6, vs. Dominican - 01/30/18*
Steals: 9, vs Georgian Court - 03/02/19*
Blocks: 3, 7x- last at College of Staten Island, 11/17/21
FG made: 13, at Post - 01/22/19*
3FG made: 6, at Post - 01/22/19*
FT made: 6, 3x, last vs. Georgian Court - 03/02/19*
Career Double-Doubles: N/A

CAREER STATISTICS

| SEASON | TEAM | GP-GS | MIN/AVG | Field Goals | | 3-Point | | F-Throws | | Rebounds | | | | Scoring | | | | | | |
|---------------|------|-------|-----------|-------------|------|----------|------|----------|------|----------|-----|-----|-----|---------|-----|-----|-----|-----|-----|------|
| | | | | FG-FGA | FG% | 3FG-3FGA | 3FG% | FT-FTA | FT% | OFF | DEF | TOT | AVG | PF-FO | A | TO | BLK | STL | PTS | AVG |
| 2017-18 | Fel | 24-13 | 582/24.3 | 76-248 | .306 | 22-96 | .229 | 52-82 | .634 | 30 | 70 | 100 | 4.2 | 62-4 | 42 | 94 | 21 | 41 | 226 | 9.4 |
| 2018-19 | Fel | 26-20 | 673/25.9 | 127-393 | .323 | 49-179 | .274 | 56-88 | .636 | 26 | 98 | 124 | 4.8 | 93-7 | 64 | 97 | 27 | 69 | 359 | 13.8 |
| 2019-20 | UNH | 27-0 | 475/17.6 | 61-163 | .374 | 8-31 | .258 | 25-32 | .781 | 24 | 56 | 80 | 3.0 | 57-2 | 31 | 74 | 5 | 32 | 155 | 5.7 |
| 2021-22 | UNH | 11-8 | 219/19.9 | 28-81 | .346 | 2-6 | .333 | 11-18 | .611 | 13 | 18 | 31 | 2.8 | 26-1 | 10 | 36 | 6 | 15 | 69 | 6.3 |
| TOTAL FOR UNH | | 38-8 | 695/18.3 | 89-244 | .365 | 10-37 | .270 | 36-50 | .720 | 37 | 74 | 111 | 2.9 | 83-3 | 41 | 110 | 11 | 47 | 224 | 5.9 |
| TOTAL | | 88-41 | 1950/22.2 | 292-885 | .330 | 81-312 | .260 | 144-220 | .655 | 93 | 242 | 335 | 3.8 | 238-14 | 147 | 301 | 59 | 157 | 809 | 9.2 |



PLAYER CAREER/SEASON STATS



LUZDALI OCASIO

23

GUARD

GRADUATE STUDENT | 5-4

DAVENPORT, FLA. | NEW HAMPTON

SINGLE-GAME SEASON HIGHS

Points: 7, vs. Chestnut Hill, 12/19/21
 Rebounds: 2, vs. Georgian Court - 11/14/21
 Assists: 4, vs. Georgian Court - 11/14/21
 Steals: 4, vs. Georgian Court - 11/14/21
 Blocks: 1, at College of Staten Island, 11/17/21
 FG made: 2, vs. Georgian Court - 11/14/21
 3FG made: 2, vs. Chestnut Hill, 12/19/21
 FT made: 1, 3x - last vs. Chestnut Hill, 12/19/21
 Double-Doubles: N/A

SINGLE-GAME CAREER HIGHS

Points: 11, vs. Bentley - 01/14/20
 Rebounds: 6, at Saint Michael's - 01/11/20
 Assists: 10, at Chestnut Hill - 12/11/19
 Steals: 7, vs. Saint Anselm - 01/22/20
 Blocks: 1, 5x- last at College of Staten Island, 11/17/21
 FG made: 4, vs. Bloomfield - 11/20/19
 3FG made: 3, vs. Bentley - 01/14/20
 FT made: 3, 2x- last vs. American Int'l - 02/15/20
 Double-Doubles: N/A

CAREER STATISTICS

| | | | | | | | | | | | | | | | | | | | | |
|---------|-----|------|----------|-------|------|------|------|-------|------|---|----|----|-----|------|---|----|---|---|----|-----|
| 2021-22 | UNH | 11-3 | 151/13.7 | 15-36 | .417 | 3-11 | .273 | 10-14 | .714 | 7 | 10 | 17 | 1.5 | 5-0 | 5 | 15 | 0 | 8 | 43 | 3.9 |
| TOTAL | | 26-3 | 219/8.4 | 19-49 | .388 | 4-16 | .250 | 10-14 | .714 | 8 | 16 | 24 | 0.9 | 15-0 | 8 | 19 | 0 | 9 | 52 | 2.0 |

Single Game Highs

| Statistic | Value | |
|-----------|-------|--|
| Points | 11 | vs Stonehill 01/15/22 at Southern Conn. St. 12/01/21 |



PLAYER CAREER/SEASON STATS



BRIË PERGOLA

25

GUARD

GRADUATE STUDENT | **5-8**
TORRINGTON, CONN. | **TORRINGTON**

2019-20 SEASON HIGHS

Points: 24, at College of Staten Island, 11/17/21
 Rebounds: 9, at College of Staten Island, 11/17/21
 Assists: 6, vs. Georgian Court - 11/14/21
 Steals: 4, vs. Bloomfield - 11/13/21
 Blocks: 2, at College of Staten Island, 11/17/21
 FG made: 8, at College of Staten Island, 11/17/21
 3FG made: 6, at College of Staten Island, 11/17/21
 FT made: 6, 2x - last at Saint Rose - 12/4/21
 Double-Doubles: N/A

SINGLE-GAME CAREER HIGHS

Points: 24, at College of Staten Island, 11/17/21
 Rebounds: 10, at SNHU - 01/28/20
 Assists: 7, at Adelphi - 01/04/20
 Steals: 6, vs. Staten Island - 11/09/19
 Blocks: 2, 3x - last at College of Staten Island, 11/17/21
 FG made: 8, 3x - last at College of Staten Island, 11/17/21
 3FG made: 6, at College of Staten Island, 11/17/21
 FT made: 8, 2x - last at So. Conn. St. - 02/19/20
 Career Double-Doubles: 1, last at SNHU, 01/28/20

CAREER STATISTICS

| | | |
|-------------|---|--|
| FT Made | 3 | vs Southern Conn. St. 02/06/19, vs American Int'l 02/15/20 |
| FT Attempts | 8 | vs Southern Conn. St. 02/06/19 |

PENDLETON, Bianca

| | | | | Field Goals | | 3-Point | | F-Throws | | Rebounds | | | | | | | | | Scoring | |
|---------|------|-------|---------|-------------|------|----------|------|----------|------|----------|-----|-----|-----|-------|---|----|-----|-----|---------|-----|
| SEASON | TEAM | GP-GS | MIN/AVG | FG-FGA | FG% | 3FG-3FGA | 3FG% | FT-FTA | FT% | OFF | DEF | TOT | AVG | PF-FO | A | TO | BLK | STL | PTS | AVG |
| 2021-22 | UNH | 10-0 | 74/7.4 | 9-24 | .375 | 0-0 | .000 | 11-21 | .524 | 6 | 12 | 18 | 1.8 | 19-0 | 5 | 8 | 4 | 1 | 29 | 2.9 |



PLAYER CAREER/SEASON STATS



BIANCA PENDLETON

32

FORWARD

FRESHMAN | 6-0

ACCOKEEK, MD. | NEW HOPE ACADEMY

2020-21 SEASON HIGHS

Points: 15, vs. Adelphi, 1/17/22
 Rebounds: 5, vs. Bloomfield - 11/13/21
 Assists: 2, vs. Chestnut Hill, 12/19/21
 Steals: 1, at Le Moyne, 11/20/21
 Blocks: 3, at Bloomfield, 12/17/2021
 FG made: 6, vs. Adelphi, 1/17/22
 3FG made: N/A
 FT made: 3, 3x- last vs. Adelphi, 1/17/22
 Double-Doubles: N/A

SINGLE-GAME CAREER HIGHS

Points: 15, vs. Adelphi, 1/17/22
 Rebounds: 5, vs. Bloomfield - 11/13/21
 Assists: 2, vs. Chestnut Hill, 12/19/21
 Steals: 1, at Le Moyne, 11/20/21
 Blocks: 3, at Bloomfield, 12/17/2021
 FG made: 6, vs. Adelphi, 1/17/22
 3FG made: N/A
 FT made: 3, 3x- last vs. Adelphi, 1/17/22
 Double-Doubles: N/A

CAREER STATISTICS

| | | | | Field Goals | | 3-Point | | F-Throws | | Rebounds | | | | | | | | Scoring | | |
|---------|------|-------|----------|-------------|------|----------|------|----------|------|----------|-----|-----|-----|-------|----|----|-----|---------|-----|-----|
| SEASON | TEAM | GP-GS | MIN/AVG | FG-FGA | FG% | 3FG-3FGA | 3FG% | FT-FTA | FT% | OFF | DEF | TOT | AVG | PF-FO | A | TO | BLK | STL | PTS | AVG |
| 2018-19 | UNH | 30-0 | 477/15.9 | 19-77 | .247 | 7-38 | .184 | 22-35 | .629 | 4 | 30 | 34 | 1.1 | 48-0 | 49 | 47 | 1 | 16 | 67 | 2.2 |
| 2019-20 | UNH | 27-27 | 781/28.9 | 18-78 | .231 | 10-49 | .204 | 17-27 | .630 | 6 | 62 | 68 | 2.5 | 57-0 | 85 | 75 | 3 | 37 | 63 | 2.3 |
| 2021-22 | UNH | 10-5 | 181/18.1 | 8-27 | .296 | 3-16 | .313 | 3-6 | .500 | 1 | 7 | 8 | 0.8 | 21-0 | 12 | 13 | 1 | 9 | 24 | 2.4 |



AURORA DESHAIES

34

FORWARD

JUNIOR | 6-1

SYRACUSE, N.Y. | BISHOP LUDDEN

2019-20 SEASON HIGHS

Points: 23, vs. Georgian Court - 11/14/21
 Rebounds: 16, vs. Georgian Court - 11/14/21
 Assists: 3, vs. Chestnut Hill, 12/19/21
 Steals: 1, 5x- last at Bloomfield, 12/17/21
 Blocks: 1, 6x - last vs. Chestnut Hill, 12/19/21
 FG made: 11, vs. Georgian Court - 11/14/21
 3FG made: N/A
 FT made: 2, 4x - last at Saint Rose, 12/4/21
 Double-Doubles: 4, last vs. Chestnut Hill, 12/19/21

SINGLE-GAME CAREER HIGHS

Points: 23, vs. Georgian Court - 11/14/21
 Rebounds: 16, vs. Georgian Court - 11/14/21
 Assists: 3, vs. Chestnut Hill, 12/19/21
 Steals: 3, at Saint Rose - 02/12/20
 Blocks: 3, at Saint Thomas Aquinas - 01/08/20
 FG made: 11, vs. Georgian Court - 11/14/21
 3FG made: N/A
 FT made: 6, at Le Moyne - 02/08/20
 Double-Doubles: 7, last vs. Chestnut Hill, 12/19/21

CAREER STATISTICS

| | | | | Field Goals | | 3-Point | | F-Throws | | Rebounds | | | | | | | | | | Scoring | |
|---------|------|-------|-----------|-------------|------|----------|------|----------|------|----------|-----|-----|-----|-------|----|-----|-----|-----|-----|---------|--|
| SEASON | TEAM | GP-GS | MIN/AVG | FG-FGA | FG% | 3FG-3FGA | 3FG% | FT-FTA | FT% | OFF | DEF | TOT | AVG | PF-FO | A | TO | BLK | STL | PTS | AVG | |
| 2018-19 | UNH | 30-30 | 947/31.6 | 99-261 | .379 | 37-110 | .336 | 40-67 | .597 | 22 | 107 | 129 | 4.3 | 75-0 | 39 | 75 | 5 | 62 | 275 | 9.2 | |
| 2019-20 | UNH | 27-27 | 834/30.9 | 93-254 | .366 | 35-106 | .330 | 49-69 | .710 | 29 | 104 | 133 | 4.9 | 52-1 | 29 | 57 | 8 | 48 | 270 | 10.0 | |
| 2021-22 | UNH | 13-13 | 453/34.8 | 78-193 | .404 | 22-57 | .386 | 37-56 | .661 | 18 | 41 | 59 | 4.5 | 29-1 | 26 | 45 | 5 | 28 | 215 | 16.5 | |
| TOTAL | | 70-70 | 2234/31.9 | 270-708 | .381 | 94-273 | .344 | 126-192 | .656 | 69 | 252 | 321 | 4.6 | 156-2 | 94 | 177 | 18 | 138 | 760 | 10.9 | |

PLAYER CAREER/SEASON STATS

**ALYSSA STEVENSON****44****FORWARD****JUNIOR | 6-2****WATERTOWN, N.Y. | SOUTH JEFFERSON CENTRAL****2019-20 SEASON HIGHS**

Points: 8, vs. Adelphi, 1/17/22
 Rebounds: 12, vs. Adelphi, 1/17/22
 Assists: 3, vs. Stonehill, 1/15/22
 Steals: 3, at Saint Rose - 12/4/21
 Blocks: 1, 2x - last vs. Stonehill, 1/15/22
 FG made: 4, vs. Adelphi, 1/17/22
 3FG made: N/A
 FT made: 3, at Saint Rose, 12/4/21
 Double-Doubles: N/A

SINGLE-GAME CAREER HIGHS

Points: 8, vs. Adelphi, 1/17/22
 Rebounds: 12, vs. Adelphi, 1/17/22
 Assists: 3, vs. Stonehill, 1/15/22
 Steals: 3, at Saint Rose - 12/4/21
 Blocks: 1, 2x - last vs. Stonehill, 1/15/22
 FG made: 4, vs. Adelphi, 1/17/22
 3FG made: N/A
 FT made: 3, at Saint Rose, 12/4/21
 Double-Doubles: N/A

CAREER STATISTICS

| | | |
|--------------|----|---|
| FG Made | 8 | at American Int'l 11/21/17, vs Colley-Beebe 11/20/17, at Staten Island 11/17/21 |
| FG Attempts | 17 | vs Saint Rose 12/02/17, at Saint Rose 02/10/18, at Staten Island 11/17/21 |
| 3FG Made | 6 | at Staten Island 11/17/21 |
| 3FG Attempts | 11 | at Staten Island 11/17/21 |
| FT Made | 8 | at St. Anselm 01/09/19, at Southern Conn. St. 02/19/20 |

NEW HAVEN VS BLOOMFIELD
11/13/21 • NEW HAVEN, CT

GAME 1

New Haven (1-0,0-0 NE10) -vs- Bloomfield (0-1,0-0 CACC)
11/13/21 atDate: 11/13/21
Time: 6:00 PM
Attendance: 250
Referees: Ric Raffone, Tony Troilo, Andre Smith

| Score By Period | 1 | 2 | 3 | 4 | Total |
|-----------------|----|----|----|----|-------|
| New Haven | 17 | 23 | 12 | 11 | 63 |
| Bloomfield | 1 | 9 | 14 | 13 | 37 |

New Haven 63

| # | Player | GS | MIN | FG | 3PT | FT | ORB-DRB | REB | PF | A | TO | BLK | STL | PTS |
|---------------|-------------------|----|-----|------|-------|------|---------|-------|----|----|----|-----|-----|-------|
| 11 | DeBose,Camryn | * | 33 | 6-12 | 1-3 | 2-3 | 0-4 | 4 | 1 | 3 | 4 | 0 | 1 | 15 |
| 25 | Pergola,Brie | * | 31 | 4-12 | 0-2 | 5-8 | 3-4 | 7 | 3 | 5 | 1 | 1 | 4 | 13 |
| 12 | Van Cleef,Briana | * | 25 | 5-7 | 0-2 | 0-2 | 2-5 | 7 | 2 | 0 | 2 | 0 | 1 | 10 |
| 34 | Deshales,Aurora | * | 27 | 3-7 | 0-0 | 2-4 | 2-10 | 12 | 3 | 0 | 4 | 1 | 1 | 8 |
| 22 | Chambers,Bionca | * | 19 | 2-5 | 0-0 | 0-0 | 1-0 | 1 | 2 | 0 | 8 | 1 | 3 | 4 |
| 23 | Ocasio,Luzdali | | 18 | 2-4 | 1-1 | 0-0 | 0-0 | 0 | 2 | 1 | 1 | 0 | 1 | 5 |
| 15 | Bacaliu,Margiona | | 14 | 1-2 | 1-2 | 0-0 | 0-2 | 2 | 3 | 1 | 1 | 0 | 2 | 3 |
| 13 | Pendleton,Bianca | | 13 | 0-2 | 0-0 | 3-8 | 2-3 | 5 | 4 | 1 | 2 | 0 | 0 | 3 |
| 04 | Jackson,Lyrik | | 3 | 0-3 | 0-1 | 2-2 | 0-1 | 1 | 0 | 0 | 0 | 0 | 0 | 2 |
| 10 | Riley,Azure | | 6 | 0-1 | 0-0 | 0-0 | 1-0 | 1 | 0 | 0 | 1 | 0 | 0 | 0 |
| 01 | Stickle,Gabrielle | | 4 | 0-0 | 0-0 | 0-0 | 0-0 | 0 | 0 | 0 | 0 | 0 | 0 | 0 |
| 21 | King,Kameryn | | 4 | 0-1 | 0-1 | 0-0 | 0-1 | 1 | 0 | 0 | 0 | 0 | 0 | 0 |
| 05 | Bassett,Charlotte | | 3 | 0-0 | 0-0 | 0-0 | 0-0 | 0 | 1 | 0 | 0 | 0 | 0 | 0 |
| TM TEAM | | | 0 | 0-0 | 0-0 | 0-0 | 0-0 | 0 | 0 | 0 | 0 | 0 | 0 | 0 |
| Totals | | | - | 200 | 23-56 | 3-12 | 14-27 | 11-30 | 41 | 21 | 11 | 24 | 3 | 13 63 |

| Team Summary | FG | 3PT | FT |
|--------------|---------------------|--------------------|---------------------|
| 1st Quarter | 8-17 47.06 % | 0-2 0.00 % | 1-1 100.00 % |
| 2nd Quarter | 7-13 53.85 % | 2-4 50.00 % | 7-10 70.00 % |
| 3rd Quarter | 5-15 33.33 % | 0-3 0.00 % | 2-6 33.33 % |
| 4th Quarter | 3-11 27.27 % | 1-3 33.33 % | 4-10 40.00 % |
| Total | 23-56 41.1 % | 3-12 25.0 % | 14-27 51.9 % |

Technical Fouls: none Second Chance Points: 12 Scores Tied: 0 times(s) Points in the Paint: 32 Fast Break Points: 11
Lead Changed: 0 times(s) Points off Turnovers: 20 Bench Points: 13 Largest Lead: 0 0

Bloomfield 37

| # | Player | GS | MIN | FG | 3PT | FT | ORB-DRB | REB | PF | A | TO | BLK | STL | PTS |
|---------------|-------------------|----|-----|------|-------|------|---------|-------|----|----|----|-----|-----|-------|
| 14 | McDuffie,Jasmine | * | 28 | 2-11 | 0-1 | 4-6 | 3-2 | 5 | 4 | 0 | 3 | 2 | 1 | 8 |
| 30 | Ruffin,Dashanique | * | 24 | 1-2 | 0-0 | 1-6 | 3-8 | 11 | 4 | 0 | 4 | 0 | 2 | 3 |
| 11 | Smith,Siani | * | 17 | 1-2 | 0-0 | 0-0 | 4-0 | 4 | 4 | 1 | 1 | 0 | 1 | 2 |
| 24 | Ford,Tanashia | * | 17 | 0-2 | 0-0 | 2-2 | 1-2 | 3 | 0 | 2 | 6 | 0 | 2 | 2 |
| 01 | Sykes,Kayla | * | 16 | 0-7 | 0-6 | 0-0 | 0-2 | 2 | 0 | 0 | 2 | 0 | 0 | 0 |
| 15 | Tucker,Taneshia | | 28 | 3-8 | 1-4 | 4-4 | 0-1 | 1 | 2 | 2 | 4 | 0 | 4 | 11 |
| 31 | Bryant,Nyasia | | 16 | 1-4 | 0-0 | 1-2 | 1-3 | 4 | 5 | 0 | 3 | 0 | 0 | 3 |
| 12 | Jackson,Myasia | | 18 | 1-6 | 0-2 | 0-0 | 0-4 | 4 | 3 | 0 | 3 | 0 | 2 | 2 |
| 05 | Babbs,Kamrin | | 16 | 1-7 | 0-2 | 0-0 | 0-0 | 0 | 0 | 0 | 0 | 0 | 1 | 2 |
| 21 | Bennett,Jaylah | | 10 | 0-2 | 0-2 | 2-2 | 0-2 | 2 | 2 | 0 | 3 | 0 | 1 | 2 |
| 22 | Akinefon,Morenike | | 10 | 1-4 | 0-0 | 0-0 | 1-2 | 3 | 4 | 1 | 0 | 0 | 0 | 2 |
| TM TEAM | | | 0 | 0-0 | 0-0 | 1-1 | 2 | 0 | 0 | 0 | 0 | 0 | 0 | 0 |
| Totals | | | - | 200 | 11-55 | 1-17 | 14-22 | 14-27 | 41 | 28 | 6 | 29 | 2 | 14 37 |

| Team Summary | FG | 3PT | FT |
|--------------|---------------------|-------------------|---------------------|
| 1st Quarter | 0-14 0.00 % | 0-5 0.00 % | 1-2 50.00 % |
| 2nd Quarter | 4-17 23.53 % | 0-2 0.00 % | 1-2 50.00 % |
| 3rd Quarter | 4-11 36.36 % | 0-5 0.00 % | 6-12 50.00 % |
| 4th Quarter | 3-13 23.08 % | 1-5 20.00 % | 6-6 100.00 % |
| Total | 11-55 20.0 % | 1-17 5.9 % | 14-22 63.6 % |

NEW HAVEN AT STATEN ISLAND
11/17/21 • STATEN ISLAND, NY

GAME 3

University of New Haven (3-0) -vs- Staten Island (1-2)
11/17/21 at Staten Island, NYDate: 11/17/21
Time: 7:26 p.m.
Attendance: 179
Site: Staten Island, NY

| Score By Period | 1 | 2 | 3 | 4 | OT 1 | Total |
|-------------------------|----|----|----|----|------|-------|
| University of New Haven | 14 | 19 | 18 | 10 | 11 | 72 |
| Staten Island | 11 | 23 | 21 | 6 | 3 | 64 |

University of New Haven 72

| # | Player | GS | MIN | FG | 3PT | FT | ORB-DRB | REB | PF | A | TO | BLK | STL | PTS |
|---------------|-------------------|----|-----|------|-------|------|---------|-------|----|----|----|-----|-----|------|
| 25 | Brie Pergola | * | 45 | 8-17 | 6-11 | 2-4 | 0-9 | 9 | 1 | 1 | 4 | 2 | 3 | 24 |
| 11 | Camryn Debose | * | 45 | 7-25 | 2-11 | 2-3 | 4-2 | 6 | 3 | 2 | 3 | 0 | 3 | 18 |
| 34 | Aurora Deshaies | * | 26 | 5-6 | 0-0 | 2-2 | 3-6 | 9 | 4 | 0 | 2 | 1 | 0 | 12 |
| 22 | Bionca Chambers | * | 34 | 3-7 | 0-0 | 0-0 | 4-3 | 7 | 0 | 1 | 3 | 3 | 2 | 6 |
| 12 | Briana Van cleaf | * | 38 | 2-11 | 0-3 | 0-4 | 5-5 | 10 | 5 | 2 | 5 | 0 | 1 | 4 |
| 23 | Luzdali Ocasio | | 10 | 1-1 | 1-1 | 1-2 | 0-0 | 0 | 3 | 2 | 0 | 1 | 0 | 4 |
| 10 | Azure Riley | | 11 | 1-5 | 0-0 | 0-0 | 4-2 | 6 | 2 | 0 | 2 | 0 | 0 | 2 |
| 15 | Marigona Bacaliu | | 8 | 1-2 | 0-1 | 0-0 | 0-0 | 0 | 1 | 1 | 0 | 0 | 0 | 2 |
| 01 | Gabrielle Stickle | | 4 | 0-1 | 0-1 | 0-0 | 0-0 | 0 | 1 | 1 | 1 | 0 | 0 | 0 |
| 32 | Bianca Pendleton | | 4 | 0-1 | 0-0 | 0-0 | 0-1 | 1 | 2 | 0 | 0 | 0 | 0 | 0 |
| TM TEAM | | | 0 | 0-0 | 0-0 | 0-0 | 1-2 | 3 | 0 | 0 | 0 | 0 | 0 | 0 |
| Totals | | | - | 225 | 28-76 | 9-30 | 7-15 | 21-30 | 51 | 22 | 10 | 20 | 7 | 9 72 |

| Team Summary | FG | 3PT | FT |
|--------------|---------------------|--------------------|--------------------|
| 1st Quarter | 5-15 33.33 % | 2-7 28.57 % | 2-2 100.00 % |
| 2nd Quarter | 8-22 36.36 % | 3-8 37.50 % | 0-0 0.00 % |
| 3rd Quarter | 8-16 50.00 % | 2-5 40.00 % | 0-1 0.00 % |
| 4th Quarter | 4-18 22.22 % | 0-7 0.00 % | 2-4 50.00 % |
| OT 1 | 3-5 60.00 % | 2-3 66.67 % | 3-8 37.50 % |
| Total | 28-76 36.8 % | 9-30 30.0 % | 7-15 46.7 % |

Technical Fouls: none Second Chance Points: 22 Scores Tied: 1 times(s) Points in the Paint: 30 Fast Break Points: 0
Lead Changed: 1 times(s) Points off Turnovers: 16 Bench Points: 8 Largest Lead: 9 2nd-03:42

Staten Island 64

| # | Player | GS | MIN | FG | 3PT | FT | ORB-DRB | REB | PF | A | TO | BLK | STL | PTS |
|---------------|------------------|----|-----|------|-------|------|---------|-------|----|----|----|-----|-----|------|
| 13 | Janyalse Alarcon | * | 44 | 5-13 | 0-3 | 5-6 | 7-14 | 21 | 1 | 3 | 6 | 0 | 1 | 15 |
| 14 | Elizabeth Lofaro | * | 37 | 1-11 | 1-4 | 6-8 | 3-4 | 7 | 3 | 2 | 5 | 0 | 1 | 9 |
| 02 | Ashley Lambert | * | 30 | 2-8 | 1-6 | 2-2 | 1-4 | 5 | 2 | 3 | 0 | 0 | 1 | 7 |
| 03 | Noemia Massingue | * | 32 | 2-7 | 0-1 | 0-0 | 2-1 | 3 | 3 | 1 | 3 | 1 | 1 | 4 |
| 15 | Kristina Arvelo | * | 20 | 0-5 | 0-0 | 0-0 | 1-0 | 1 | 4 | 0 | 1 | 0 | 0 | 0 |
| 24 | Gia Esposito | | 28 | 6-15 | 4-8 | 2-3 | 2-0 | 2 | 2 | 1 | 4 | 1 | 2 | 18 |
| 04 | Kaia Johnson | | 34 | 4-12 | 0-1 | 3-4 | 3-2 | 5 | 4 | 2 | 1 | 1 | 3 | 11 |
| TM TEAM | | | 0 | 0-0 | 0-0 | 0-0 | 0-5 | 5 | 0 | 0 | 0 | 0 | 0 | 0 |
| Totals | | | - | 225 | 20-71 | 6-26 | 18-23 | 19-30 | 49 | 19 | 12 | 20 | 5 | 9 64 |

| Team Summary | FG | 3PT | FT |
|--------------|---------------------|--------------------|---------------------|
| 1st Quarter | 5-18 27.78 % | 1-5 20.00 % | 0-0 0.00 % |
| 2nd Quarter | 6-12 50.00 % | 2-3 66.67 % | 9-11 81.82 % |
| 3rd Quarter | 6-18 33.33 % | 3-8 37.50 % | 6-8 75.00 % |
| 4th Quarter | 2-14 14.29 % | 0-4 0.00 % | 2-2 100.00 % |
| OT 1 | 1-9 11.11 % | 0-6 0.00 % | 1-2 50.00 % |
| Total | 20-71 28.2 % | 6-26 23.1 % | 18-23 78.3 % |

Technical Fouls: none Second Chance Points: 14 Scores Tied: 4 times(s) Points in the Paint: 14 Fast Break Points: 6
Lead Changed: 2 times(s) Points off Turnovers: 13 Bench Points: 29 Largest Lead: 6 3rd-00:23NEW HAVEN VS. GEORGIAN COURT
11/14/21 • NEW HAVEN, CT

GAME 2

New Haven (2-0,0-0 NE10) -vs- Georgian Court (1-1,0-0 CACC)
11/14/21 atDate: 11/14/21
Time: 1:00 PM
Attendance: 70
Referees: Tracy Brock, James Wildman, Michael VanGelder

| Score By Period | 1 | 2 | 3 | 4 | Total |
|-----------------|----|----|----|----|-------|
| New Haven | 22 | 14 | 19 | 21 | 76 |
| Georgian Court | 25 | 18 | 17 | 14 | 74 |

New Haven 76

| # | Player | GS | MIN | FG | 3PT | FT | ORB-DRB | REB | PF | A | TO | BLK | STL | PTS |
|---------------|-------------------|----|-----|-------|-------|------|---------|-------|----|----|----|-----|-----|------|
| 34 | Deshales,Aurora | * | 37 | 11-18 | 0-0 | 1-7 | 9-7 | 16 | 4 | 0 | 7 | 1 | 0 | 23 |
| 11 | DeBose,Camryn | * | 40 | 7-17 | 1-1 | 7-10 | 1-3 | 4 | 2 | 2 | 4 | 0 | 2 | 22 |
| 25 | Pergola,Brie | * | 37 | 3-8 | 1-2 | 6-8 | 0-3 | 3 | 2 | 6 | 4 | 0 | 0 | 13 |
| 22 | Chambers,Bionca | * | 22 | 3-9 | 0-0 | 5-6 | 2-2 | 4 | 5 | 0 | 2 | 0 | 1 | 11 |
| 12 | Van Cleef,Briana | * | 21 | 0-1 | 0-0 | 0-0 | 2-4 | 6 | 5 | 1 | 4 | 1 | 1 | 0 |
| 23 | Ocasio,Luzdali | | 30 | 2-3 | 0-0 | 1-2 | 0-2 | 2 | 1 | 4 | 2 | 0 | 4 | 5 |
| 01 | Stickle,Gabrielle | | 3 | 0-1 | 0-0 | 2-2 | 0-0 | 0 | 2 | 0 | 0 | 0 | 0 | 2 |
| 15 | Bacaliu,Margiona | | 9 | 0-2 | 0-1 | 0-0 | 0-0 | 0 | 1 | 0 | 0 | 0 | 0 | 0 |
| 10 | Riley,Azure | | 1 | 0-0 | 0-0 | 0-0 | 0-0 | 0 | 0 | 0 | 0 | 0 | 0 | 0 |
| TM TEAM | | | 0 | 0-0 | 0-0 | 0-0 | 2-2 | 4 | 0 | 0 | 0 | 0 | 0 | 0 |
| Totals | | | - | 200 | 26-59 | 2-4 | 22-35 | 16-23 | 39 | 22 | 13 | 23 | 2 | 8 76 |

| Team Summary | FG | 3PT | FT |
|--------------|---------------------|-------------------|---------------------|
| 1st Quarter | 9-15 60.00 % | 2-2 100.00 % | 2-3 66.67 % |
| 2nd Quarter | 5-17 29.41 % | 0-1 0.00 % | 4-6 66.67 % |
| 3rd Quarter | 6-14 42.86 % | 0-0 0.00 % | 7-14 50.00 % |
| 4th Quarter | 6-13 46.15 % | 0-1 0.00 % | 9-12 75.00 % |
| Total | 26-59 44.1 % | 2-4 50.0 % | 22-35 62.9 % |

Technical Fouls: none Second Chance Points: 16 Scores Tied: 11 times(s) Points in the Paint: 40 Fast Break Points: 6
Lead Changed: 9 times(s) Points off Turnovers: 25 Bench Points: 7 Largest Lead: 0 0

Georgian Court 74

| # | Player | GS | MIN | FG | 3PT | FT | ORB-DRB | REB | PF | A | TO | BLK | STL | PTS |
|---------------|---------------------|----|-----|------|-------|------|---------|-------|----|----|----|-----|-----|-------|
| 04 | Aspaajo,Erika | * | 36 | 8-12 | 5-9 | 2-4 | 1-2 | 3 | 0 | 5 | 5 | 0 | 1 | 23 |
| 00 | Fields,Anyssa | * | 29 | 7-18 | 2-5 | 2-2 | 4-3 | 7 | 5 | 0 | 4 | 0 | 3 | 18 |
| 22 | Brajac,Nerea | * | 33 | 5-10 | 0-2 | 2-2 | 3-3 | 6 | 3 | 5 | 3 | 1 | 2 | 12 |
| 01 | Addison,Tian | * | 30 | 4-9 | 1-3 | 0-1 | 0-0 | 0 | 5 | 1 | 4 | 0 | 1 | 9 |
| 15 | Thrainsdottir,Hanna | * | 26 | 2-8 | 1-3 | 3-5 | 2-6 | 8 | 5 | 7 | 2 | 1 | 1 | 8 |
| 10 | Linker,Leighanna | | 25 | 1-5 | 0-0 | 0-0 | 5-4 | 9 | 5 | 1 | 3 | 0 | 2 | 2 |
| 42 | Williams,Nasira | | 4 | 1-1 | 0-0 | 0-0 | 0-0 | 0 | 1 | 0 | 0 | 0 | 0 | 2 |
| 21 | Adediran,Precious | | 11 | 0-2 | 0-1 | 0-0 | 2-2 | 4 | 0 | 0 | 2 | 0 | 1 | 0 |
| 13 | Hills,Aniya | | 3 | 0-0 | 0-0 | 0-0 | 0-1 | 1 | 0 | 0 | 1 | 1 | 0 | 0 |
| 14 | Tarry,Zahniyyah | | 3 | 0-0 | 0-0 | 0-0 | 0-0 | 0 | 1 | 0 | 1 | 0 | 0 | 0 |
| TM TEAM | | | 0 | 0-0 | 0-0 | 0-0 | 1-2 | 3 | 0 | 0 | 0 | 0 | 0 | 0 |
| Totals | | | - | 200 | 28-65 | 9-23 | 9-14 | 18-23 | 41 | 25 | 19 | 25 | 3 | 11 74 |

| Team Summary | FG | 3PT | FT |
|--------------|---------------|-------------|-------------|
| 1st Quarter | 10-15 66.67 % | 4-8 50.00 % | 1-2 50.00 % |
| 2nd Quarter | 8-18 44.44 % | 2-6 33.33 % | 0-0 0.00 % |
| 3rd Quarter | 5-15 33.33 % | 1-2 50.00 % | 6-9 66.67 % |
| 4th Quarter | 5-17 29.41 % | 2-7 28.57 % | 2-3 66.67 % |
| Total | 28-65 43.1 % | 9-23 39.1 % | 9-14 64.3 % |

OPPONENT GAME-BY-GAME STATISTICS

| DATE | OPPONENT | FG-FGA | PCT. | 3P-3PA | PCT. | FT-FTA | PCT. | OR-DR-TRB | AST | TO | BLK | STL | PTS |
|-------|-----------------------------|--------|------|--------|------|--------|-------|-----------|-----|----|-----|-----|-----|
| 11/13 | NEW HAVEN | 23-56 | .411 | 3-12 | .250 | 14-27 | .519 | 11-30-41 | 11 | 24 | 3 | 13 | 63 |
| | vs. Bloomfield | 11-55 | .200 | 1-17 | .059 | 14-22 | .636 | 14-27-41 | 6 | 29 | 2 | 14 | 37 |
| 11/14 | NEW HAVEN | 26-59 | .441 | 2-4 | .500 | 22-35 | .629 | 16-23-39 | 13 | 23 | 2 | 8 | 76 |
| | vs. Georgian Court | 28-65 | .431 | 9-23 | .391 | 9-14 | .643 | 18-23-41 | 19 | 25 | 3 | 11 | 74 |
| 11/17 | NEW HAVEN | 28-76 | .368 | 9-30 | .300 | 7-15 | .467 | 21-30-51 | 10 | 20 | 7 | 9 | 72 |
| | at College of Staten Island | 20-71 | .282 | 6-26 | .231 | 18-23 | .783 | 19-30-49 | 12 | 20 | 5 | 9 | 64 |
| 11/20 | NEW HAVEN | 16-56 | .286 | 3-14 | .214 | 13-16 | .813 | 13-23-36 | 7 | 16 | 2 | 9 | 48 |
| | at Le Moyne | 19-61 | .311 | 5-20 | .250 | 22-29 | .759 | 22-28-50 | 15 | 14 | 4 | 9 | 65 |
| 11/23 | NEW HAVEN | 22-57 | .386 | 3-12 | .250 | 4-13 | .308 | 8-22-30 | 7 | 16 | 1 | 5 | 51 |
| | vs. Pace | 23-46 | .500 | 8-20 | .400 | 18-22 | .818 | 2-32-34 | 15 | 19 | 3 | 5 | 72 |
| 11/28 | New Haven | 20-55 | .364 | 4-17 | .235 | 12-22 | .545 | 17-30-47 | 7 | 15 | 4 | 4 | 56 |
| | vs. Saint Thomas Aquinas | 18-53 | .340 | 6-19 | .316 | 1-1 | 1.000 | 5-24-29 | 14 | 12 | 0 | 7 | 43 |
| 12/1 | NEW HAVEN | 26-64 | .406 | 7-16 | .438 | 5-10 | .500 | 17-24-41 | 14 | 22 | 1 | 8 | 64 |
| | at So. Conn. State | 26-58 | .448 | 15-34 | .441 | 16-21 | .762 | 10-24-34 | 20 | 14 | 3 | 10 | 83 |
| 12/4 | NEW HAVEN | 19-58 | .328 | 5-14 | .357 | 11-15 | .733 | 16-25-41 | 4 | 22 | 1 | 9 | 54 |
| | at Saint Rose | 20-55 | .364 | 8-22 | .364 | 10-16 | .625 | 11-24-35 | 9 | 18 | 5 | 12 | 58 |
| 12/7 | New Haven | 19-54 | .352 | 5-24 | .208 | 11-23 | .478 | 14-21-35 | 11 | 21 | 2 | 14 | 54 |
| | vs. American Int'l | 21-42 | .500 | 5-11 | .455 | 19-24 | .792 | 3-28-31 | 9 | 22 | 4 | 13 | 66 |
| 12/17 | NEW HAVEN | 23-67 | .343 | 5-17 | .294 | 11-22 | .500 | 21-27-48 | 16 | 17 | 4 | 6 | 62 |
| | at Bloomfield | 23-58 | .397 | 5-10 | .500 | 6-14 | .429 | 9-28-37 | 17 | 18 | 4 | 8 | 57 |
| 12/19 | New Haven | 21-56 | .375 | 7-15 | .467 | 12-17 | .706 | 7-29-36 | 12 | 18 | 3 | 9 | 61 |
| | vs. Chestnut Hill | 18-56 | .321 | 8-22 | .364 | 22-23 | .957 | 10-31-41 | 11 | 20 | 1 | 7 | 66 |
| 12/30 | New Haven | - | - | - | - | - | - | - | - | - | - | - | - |
| | at Bridgeport (PPD) | - | - | - | - | - | - | - | - | - | - | - | - |
| 1/8 | New Haven | - | - | - | - | - | - | - | - | - | - | - | - |
| | vs. Saint Michael's (PPD) | - | - | - | - | - | - | - | - | - | - | - | - |
| 1/15 | New Haven | 24-62 | .387 | 8-16 | .500 | 5-6 | .833 | 11-28-39 | 10 | 23 | 3 | 8 | 61 |
| | vs. Stonehill | 26-62 | .419 | 3-10 | .300 | 9-14 | .643 | 10-28-38 | 14 | 20 | 3 | 10 | 64 |
| 1/17 | NEW HAVEN | 21-60 | .350 | 4-16 | .250 | 12-17 | .706 | 12-31-43 | 11 | 21 | 4 | 9 | 58 |
| | vs. Adelphi | 23-65 | .354 | 4-15 | .267 | 9-12 | .750 | 11-29-40 | 13 | 19 | 9 | 12 | 59 |
| 1/19 | NEW HAVEN | - | - | - | - | - | - | - | - | - | - | - | - |
| | at Saint Anselm | - | - | - | - | - | - | - | - | - | - | - | - |
| 1/22 | New Haven | - | - | - | - | - | - | - | - | - | - | - | - |
| | vs. Assumption | - | - | - | - | - | - | - | - | - | - | - | - |
| 1/22 | NEW HAVEN | - | - | - | - | - | - | - | - | - | - | - | - |
| | vs. Saint Anselm | - | - | - | - | - | - | - | - | - | - | - | - |
| 1/25 | New Haven | - | - | - | - | - | - | - | - | - | - | - | - |
| | vs. Southern N.H. | - | - | - | - | - | - | - | - | - | - | - | - |
| 1/29 | New Haven | - | - | - | - | - | - | - | - | - | - | - | - |
| | at Franklin Pierce | - | - | - | - | - | - | - | - | - | - | - | - |
| 2/2 | NEW HAVEN | - | - | - | - | - | - | - | - | - | - | - | - |
| | at Pace | - | - | - | - | - | - | - | - | - | - | - | - |
| 2/5 | NEW HAVEN | - | - | - | - | - | - | - | - | - | - | - | - |
| | vs. Le Moyne | - | - | - | - | - | - | - | - | - | - | - | - |
| 2/8 | New Haven | - | - | - | - | - | - | - | - | - | - | - | - |
| | vs. Saint Rose | - | - | - | - | - | - | - | - | - | - | - | - |
| 2/10 | New Haven | - | - | - | - | - | - | - | - | - | - | - | - |
| | at Bentley | - | - | - | - | - | - | - | - | - | - | - | - |
| 2/12 | New Haven | - | - | - | - | - | - | - | - | - | - | - | - |
| | at American Int'l | - | - | - | - | - | - | - | - | - | - | - | - |
| 2/16 | NEW HAVEN | - | - | - | - | - | - | - | - | - | - | - | - |
| | vs. Southern Conn. State | - | - | - | - | - | - | - | - | - | - | - | - |
| 2/19 | New Haven | - | - | - | - | - | - | - | - | - | - | - | - |
| | at Adelphi | - | - | - | - | - | - | - | - | - | - | - | - |

2021-22 SEASON STATISTICS



2021-22 New Haven Women's Basketball
Combined Team Statistics
All games

Page 1/1
as of Dec 19, 2021

Game Records

| Record | Overall | Home | Away | Neutral |
|----------------|---------|------|------|---------|
| ALL GAMES | 5-6 | 1-3 | 2-3 | 2-0 |
| CONFERENCE | 0-5 | 0-2 | 0-3 | 0-0 |
| NON-CONFERENCE | 5-1 | 1-1 | 2-0 | 2-0 |

Score by Periods

| Team | 1st | 2nd | 3rd | 4th | OT | TOT |
|-----------|-----|-----|-----|-----|----|-----|
| New Haven | 205 | 146 | 126 | 173 | 11 | 661 |
| Opponents | 176 | 208 | 149 | 149 | 3 | 685 |

Team Box Score

| No. | Player | | | | Total | | 3-Point | | F-Throw | | Rebounds | | | | | | | | | | | | | | |
|-----------|--------------------|-------|--------|------|---------|-------|----------|-------|---------|-------|----------|-----|-----|------|-----|----|-----|-----|-----|-----|-----|------|--|--|--|
| | | GP-GS | MIN | AVG | FG-FGA | FG% | 3FG-3FGA | 3FG% | FT-FTA | FT% | OFF | DEF | TOT | AVG | PF | DQ | A | TO | BLK | STL | PTS | AVG | | | |
| 11 | DEBOSE, Camryn | 11-11 | 372:58 | 33.9 | 64-160 | .400 | 18-47 | .383 | 32-50 | .640 | 14 | 35 | 49 | 4.5 | 25 | 1 | 22 | 34 | 3 | 22 | 178 | 16.2 | | | |
| 34 | DESHAIES, Aurora | 11-11 | 344:21 | 31.3 | 55-103 | .534 | 0-1 | .000 | 13-38 | .342 | 42 | 83 | 125 | 11.4 | 27 | 0 | 7 | 24 | 7 | 5 | 123 | 11.2 | | | |
| 25 | PERGOLA, Brie | 11-11 | 401:44 | 36.5 | 39-118 | .331 | 18-49 | .367 | 27-38 | .711 | 13 | 33 | 46 | 4.2 | 18 | 0 | 35 | 34 | 4 | 17 | 123 | 11.2 | | | |
| 22 | CHAMBERS, Bionca | 11-8 | 219:25 | 19.9 | 28-81 | .346 | 2-6 | .333 | 11-18 | .611 | 13 | 18 | 31 | 2.8 | 26 | 1 | 10 | 36 | 6 | 15 | 69 | 6.3 | | | |
| 12 | VAN CLEAF, Briana | 11-9 | 295:57 | 26.9 | 24-71 | .338 | 5-22 | .227 | 7-16 | .438 | 24 | 50 | 74 | 6.7 | 41 | 4 | 9 | 34 | 4 | 8 | 60 | 5.5 | | | |
| 2 | DIAZ, Brianna | 1-0 | 02:01 | 2.0 | 1-1 | 1.000 | 1-1 | 1.000 | 0-0 | .000 | 0 | 0 | 0 | 0.0 | 0 | 0 | 1 | 0 | 0 | 0 | 3 | 3.0 | | | |
| 21 | KING, Kameryn | 9-1 | 82:47 | 9.2 | 10-22 | .455 | 1-6 | .167 | 5-7 | .714 | 7 | 7 | 14 | 1.6 | 4 | 0 | 4 | 7 | 0 | 4 | 26 | 2.9 | | | |
| 23 | OCASIO, Luzdali | 10-3 | 181:13 | 18.1 | 8-27 | .296 | 5-16 | .313 | 3-6 | .500 | 1 | 7 | 8 | 0.8 | 21 | 0 | 12 | 13 | 1 | 9 | 24 | 2.4 | | | |
| 44 | STEVENSON, Alyssa | 6-1 | 62:16 | 10.4 | 2-7 | .286 | 0-0 | .000 | 9-15 | .600 | 8 | 9 | 17 | 2.8 | 11 | 0 | 1 | 8 | 1 | 4 | 13 | 2.2 | | | |
| 32 | PENDLETON, Bianca | 8-0 | 53:04 | 6.6 | 3-16 | .188 | 0-0 | .000 | 8-16 | .500 | 4 | 9 | 13 | 1.6 | 15 | 0 | 5 | 6 | 4 | 1 | 14 | 1.8 | | | |
| 4 | JACKSON, Lyrik | 7-0 | 26:11 | 3.7 | 2-7 | .286 | 0-3 | .000 | 5-5 | 1.000 | 0 | 2 | 2 | 0.3 | 1 | 0 | 0 | 1 | 0 | 1 | 9 | 1.3 | | | |
| 15 | BACALIU, Margiona | 8-0 | 80:29 | 10.1 | 4-17 | .235 | 2-11 | .182 | 0-2 | .000 | 4 | 5 | 9 | 1.1 | 13 | 0 | 2 | 5 | 0 | 4 | 10 | 1.3 | | | |
| 10 | RILEY, Azure | 6-0 | 34:08 | 5.7 | 2-11 | .182 | 0-3 | .000 | 0-2 | .000 | 6 | 5 | 11 | 1.8 | 4 | 0 | 0 | 3 | 0 | 0 | 4 | 0.7 | | | |
| 1 | STICKLE, Gabrielle | 9-0 | 63:47 | 7.1 | 1-15 | .067 | 1-8 | .125 | 2-2 | 1.000 | 1 | 1 | 2 | 0.2 | 7 | 0 | 4 | 4 | 0 | 4 | 5 | 0.6 | | | |
| 5 | BASSETT, Charlotte | 2-0 | 05:40 | 2.8 | 0-2 | .000 | 0-2 | .000 | 0-0 | .000 | 0 | 1 | 1 | 0.5 | 2 | 0 | 0 | 1 | 0 | 0 | 0 | 0.0 | | | |
| Team | | | | | | | | | | | 24 | 19 | 43 | | | | | 4 | | | | | | | |
| Total | | 11 | 2226 | | 243-658 | .369 | 53-175 | .303 | 122-215 | .567 | 161 | 284 | 445 | 40.5 | 215 | 6 | 112 | 214 | 30 | 94 | 661 | 60.1 | | | |
| Opponents | | 11 | 2226 | | 227-620 | .366 | 76-224 | .339 | 155-209 | .742 | 123 | 299 | 422 | 38.4 | 208 | 7 | 147 | 211 | 34 | 105 | 685 | 62.3 | | | |

Team Statistics

| | UNH | OPP |
|------------------------|----------------|----------------|
| Scoring | 661 | 685 |
| Points per game | 60.1 | 62.3 |
| Scoring margin | -2.2 | - |
| Field goals-att | 243-658 | 227-620 |
| Field goal pct | .369 | .366 |
| 3 point fg-att | 53-175 | 76-224 |
| 3-point FG pct | .303 | .339 |
| 3-pt FG made per game | 4.8 | 6.9 |
| Free throws-att | 122-215 | 155-209 |
| Free throw pct | .567 | .742 |
| F-Throws made per game | 11.1 | 14.1 |
| Rebounds | 445 | 422 |
| Rebounds per game | 40.5 | 38.4 |
| Rebounding margin | +2.1 | - |
| Assists | 112 | 147 |
| Assists per game | 10.2 | 13.4 |
| Turnovers | 214 | 211 |
| Turnovers per game | 19.5 | 19.2 |
| Turnover margin | -0.3 | - |
| Assist/turnover ratio | 0.5 | 0.7 |
| Steals | 94 | 105 |
| Steals per game | 8.5 | 9.5 |
| Blocks | 30 | 34 |
| Blocks per game | 2.7 | 3.1 |
| Winning streak | 0 | - |
| Home win streak | 0 | - |
| Attendance | 0 | 769 |
| Home games-Avg/Game | 4-0 | 5-154 |
| Neutral site-Avg/Game | - | 2-160 |

Team Results

| Date | Opponent | | Score | Att. |
|------------|-----------------------|-----|-------|------|
| 11/13/2021 | vs Bloomfield | W | 63-37 | 250 |
| 11/14/2021 | vs Georgian Court | W | 76-74 | 70 |
| 11/17/2021 | at Staten Island | Wot | 72-64 | 179 |
| 11/20/2021 | at Le Moyne | L | 48-65 | 265 |
| 11/23/2021 | Pace | L | 51-72 | 0 |
| 11/28/2021 | St. Thomas Aquinas | W | 56-43 | 0 |
| 12/01/2021 | at Southern Conn. St. | L | 64-83 | 120 |
| 12/04/2021 | at Saint Rose | L | 54-58 | 125 |
| 12/07/2021 | American Int'l | L | 54-66 | 0 |
| 12/17/2021 | at Bloomfield | W | 62-57 | 80 |
| 12/19/2021 | Chestnut Hill | L | 61-66 | 0 |